

Anti-Human MLPH Nanobody (SAA1233)

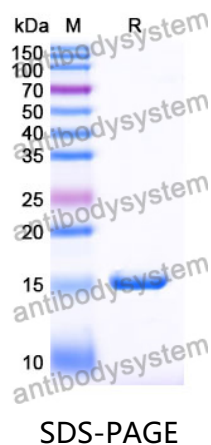
Summary

Catalog No.	RHK44701
Clone ID	SAA1233
Host species	Alpaca
Species reactivity	Human
Form	Liquid
Storage buffer	0.01M PBS, pH 7.4.
Concentration	1 mg/ml
Purity	>95% as determined by SDS-PAGE.
Clonality	Monoclonal
Isotype	VHH-8His-Cys-tag
Applications	IF
Target	SLAC2A, SlaC2-a, MLPH, Exophilin-3, Synaptotagmin-like protein 2a, Slp homolog lacking C2 domains a, Melanophilin
Purification	Purified by Nickel column.
Endotoxin level	Please contact with the lab for this information.
Expression system	Mammalian Cells
Accession	Q9BV36
Stability and Storage	Use a manual defrost freezer and avoid repeated freeze-thaw cycles. Store at 4°C short term (1-2 weeks). Store at -20°C 12 months. Store at -80°C long term.

Note

For research use only.

Data Image



SDS PAGE for Human MLPH Nanobody (SAA1233)