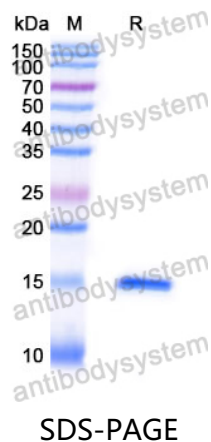


Anti-Human KLB/Beta-klotho Nanobody (SAA1184)

Summary

Catalog No.	RHJ17801
Clone ID	SAA1184
Host species	Alpaca
Species reactivity	Human
Form	Liquid
Storage buffer	0.01M PBS, pH 7.4.
Concentration	1.57 mg/ml
Purity	>95% as determined by SDS-PAGE.
Clonality	Monoclonal
Isotype	VHH-8His-Cys-tag
Applications	ELISA, SPR
Target	Klotho beta-like protein, KLB, Beta-klotho, BetaKlotho, BKL
Purification	Purified by Nickel column.
Endotoxin level	Please contact with the lab for this information.
Expression system	Mammalian Cells
Accession	Q86Z14
Stability and Storage	Use a manual defrost freezer and avoid repeated freeze-thaw cycles. Store at 4°C short term (1-2 weeks). Store at -20°C 12 months. Store at -80°C long term.
Note	For research use only.

Data Image



SDS PAGE for Human KLB/Beta-klotho Nanobody