

Anti-Human DPP6 Nanobody (SAA1245)

Summary

Catalog No.	RHE36101
Clone ID	SAA1245
Host species	Alpaca
Species reactivity	Human
Form	Liquid
Storage buffer	0.01M PBS, pH 7.4.
Concentration	1 mg/ml
Purity	>95% as determined by SDS-PAGE.
Clonality	Monoclonal
Isotype	VHH-8His-Cys-tag
Applications	ELISA, FCM, SPR
Target	DPP VI, Dipeptidyl aminopeptidase-related protein, Dipeptidyl peptidase 6, DPP6, Dipeptidyl aminopeptidase-like protein 6, Dipeptidyl peptidase IV-like protein, Dipeptidyl peptidase VI, DPPX
Purification	Purified by Nickel column.
Endotoxin level	Please contact with the lab for this information.
Expression system	Mammalian Cells
Accession	P42658

Stability and Storage

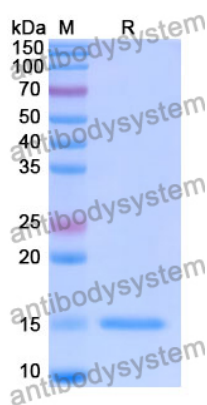
Use a manual defrost freezer and avoid repeated freeze-thaw cycles.

Store at 4°C short term (1-2 weeks). Store at -20°C 12 months. Store at -80°C long term.

Note

For research use only.

Data Image



SDS-PAGE

SDS PAGE for Human DPP6 Nanobody