

Anti-Human MAPT/Tau/PHF-tau Nanobody (SAA1351)

Summary

Catalog No.	RHC82417
Clone ID	SAA1351
Host species	Alpaca
Species reactivity	Human
Form	Liquid
Storage buffer	30mM Histidine, pH 5.8, 10% Sucrose, 0.02% Tween 80.
Concentration	1.05 mg/ml
Purity	>95% as determined by SDS-PAGE.
Clonality	Monoclonal
Isotype	VHH-8His-Cys-tag
Applications	ELISA, SPR
Target	MAPTL, Paired helical filament-tau, MTBT1, Microtubule-associated protein tau, TAU, Neurofibrillary tangle protein, MAPT, PHF-tau
Purification	Purified by Nickel column.
Endotoxin level	Please contact with the lab for this information.
Expression system	Mammalian Cells
Accession	P10636

Stability and Storage

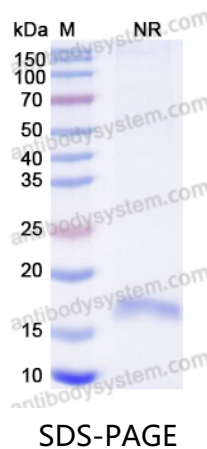
Use a manual defrost freezer and avoid repeated freeze-thaw cycles.

Store at 4°C short term (1-2 weeks). Store at -20°C 12 months. Store at -80°C long term.

Note

For research use only.

Data Image



SDS PAGE for Human MAPT/Tau/PHF-tau Nanobody