

# Anti-Human MAGEB1 Nanobody (SAA0834)

## Summary

---

|                           |  |
|---------------------------|--|
| <b>Catalog No.</b>        | RHE42701   |
| <b>Clone ID</b>           | SAA0834  |
| <b>Host species</b>       | Alpaca   |
| <b>Species reactivity</b> | Human  |
| <b>Form</b>               | Liquid   |
| <b>Storage buffer</b>     | 0.01M PBS, pH 7.4.   |
| <b>Concentration</b>      | 1 mg/ml  |
| <b>Purity</b>             | >95% as determined by SDS-PAGE.  |
| <b>Clonality</b>          | Monoclonal   |
| <b>Isotype</b>            | VHH-8His-Cys-tag   |
| <b>Applications</b>       | ELISA  |
| <b>Target</b>             | MAGEXP, CT3.1, Cancer/testis antigen 3.1, DSS-AHC critical interval MAGE superfamily 10, MAGE-B1 antigen, MAGE-XP antigen, Melanoma-associated antigen B1, DAM10, MAGEB1, MAGEL1 |
| <b>Purification</b>       | Purified by Nickel column.   |
| <b>Endotoxin level</b>    | Please contact with the lab for this information.  |
| <b>Expression system</b>  | Mammalian Cells  |
| <b>Accession</b>          | P43366   |

**Stability and Storage**

Use a manual defrost freezer and avoid repeated freeze-thaw cycles.

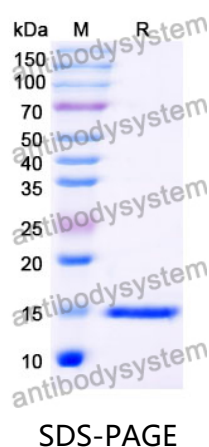
Store at 4°C short term (1-2 weeks). Store at -20°C 12 months. Store at -80°C long term.

**Note**

For research use only.

## Data Image

---



SDS PAGE for Human MAGEB1 Nanobody