

Anti-Human EPHA2 Antibody (SAA0832)

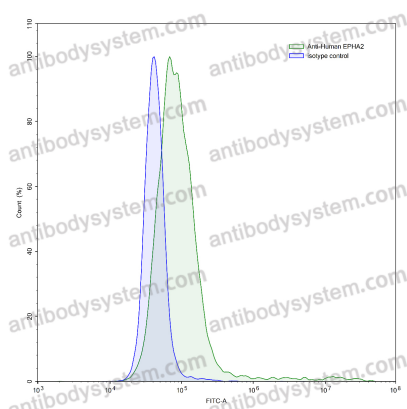
Summary

Catalog No.	FHD82410
Clone ID	SAA0832
Host species	Mouse
Conjugation	Unconjugated
Species reactivity	Human
Form	Liquid
Storage buffer	0.01M PBS, pH 7.4, 0.09% Sodium azide.
Concentration	1 mg/ml
Purity	>95% as determined by SDS-PAGE.
Clonality	Monoclonal
Isotype	IgG2a
Applications	ELISA, FCM, FuncS, IF, WB
Target	Epithelial cell kinase, Tyrosine-protein kinase receptor ECK, EPHA2, Ephrin type-A receptor 2, ECK
Purification	Protein A/G purified from cell culture supernatant.
Endotoxin level	Please contact with the lab for this information.
Accession	P29317
Stability and Storage	Use a manual defrost freezer and avoid repeated freeze-thaw cycles. Store at 4°C short term (1-2 weeks). Store at -20°C 12 months. Store at -80°C long term.

Note

For research use only.

Data Image

**Flow-cytometry**

Flow-cytometry using anti-human EPHA2 antibody. A431 cells were stained with an irrelevant antibody (Blue Histogram) or an anti-human EPHA2 antibody monoclonal antibody (Catalog # FHD82410, Green Histogram) at a concentration of 5 µg/ml for 30 mins at RT. After washing, bound antibody was detected using a FITC conjugated goat anti-mouse antibody (Catalog # PMB96441) and cells analysed on a NovoCyt Flow Cytometer.