

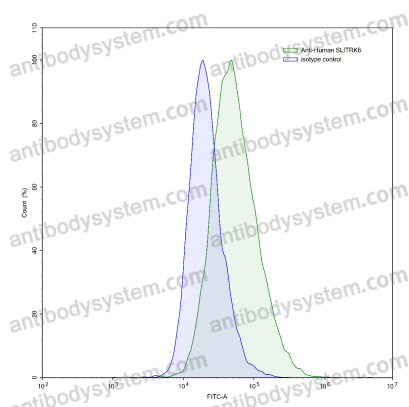
# Anti-Human SLITRK6 Antibody (SAA0827)

## Summary

---

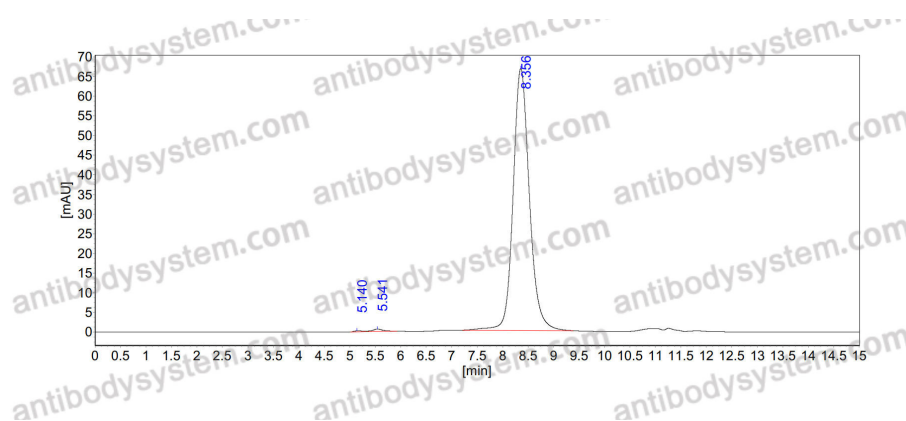
<b>Catalog No.</b>	FHK06810
<b>Clone ID</b>	SAA0827
<b>Host species</b>	Human
<b>Conjugation</b>	Unconjugated
<b>Species reactivity</b>	Human
<b>Form</b>	Liquid
<b>Storage buffer</b>	30mM Histidine, pH 5.8, 10% Sucrose, 0.06% Tween 80.
<b>Concentration</b>	2.14 mg/ml
<b>Purity</b>	>95% as determined by SDS-PAGE.
<b>Clonality</b>	Monoclonal
<b>Isotype</b>	IgG2, kappa
<b>Applications</b>	ELISA, FCM, IF
<b>Target</b>	SLITRK6, SLIT and NTRK-like protein 6
<b>Purification</b>	Protein A/G purified from cell culture supernatant.
<b>Endotoxin level</b>	Please contact with the lab for this information.
<b>Accession</b>	Q9H5Y7
<b>Stability and Storage</b>	Use a manual defrost freezer and avoid repeated freeze-thaw cycles. Store at 4°C short term (1-2 weeks). Store at -20°C 12 months. Store at -80°C long term.
<b>Note</b>	For research use only.

## Data Image



Flow-cytometry

Flow-cytometry using anti-human SLITRK6 antibody. Raji cells were stained with an irrelevant antibody (Blue Histogram) or an anti-human SLITRK6 antibody monoclonal antibody (Catalog # FHK06810, Green Histogram) at a concentration of 5  $\mu\text{g/ml}$  for 30 mins at RT. After washing, bound antibody was detected using a FITC conjugated goat anti-human antibody (Catalog # PHB96441) and cells analysed on a NovoCyt Flow Cytometer.



SEC-HPLC

The purity of this product is >95% as determined by SEC-HPLC.