

# Anti-Human CD167a/DDR1 Antibody (SAA0826)

## Summary

---

<b>Catalog No.</b>	FHG15830
<b>Clone ID</b>	SAA0826
<b>Host species</b>	Mouse
<b>Conjugation</b>	Unconjugated
<b>Species reactivity</b>	Human
<b>Form</b>	Liquid
<b>Storage buffer</b>	0.01M PBS, pH 7.4, 0.09% Sodium azide.
<b>Concentration</b>	1 mg/ml
<b>Purity</b>	>95% as determined by SDS-PAGE.
<b>Clonality</b>	Monoclonal
<b>Isotype</b>	IgG1, kappa
<b>Applications</b>	ELISA, FCM
<b>Target</b>	Protein-tyrosine kinase RTK-6, Protein-tyrosine kinase 3A, NTRK4, EDDR1, CAK, Tyrosine kinase DDR, Mammary carcinoma kinase 10, TRKE, Epithelial discoidin domain-containing receptor 1, CD167a, TRK E, Epithelial discoidin domain receptor 1, HGK2, CD167 antigen-like family member A, NEP, MCK-10, Tyrosine-protein kinase CAK, PTK3A, DDR1, Discoidin receptor tyrosine kinase, RTK6, Cell adhesion kinase
<b>Purification</b>	Protein A/G purified from cell culture supernatant.
<b>Endotoxin level</b>	Please contact with the lab for this information.
<b>Accession</b>	Q08345

### Stability and Storage

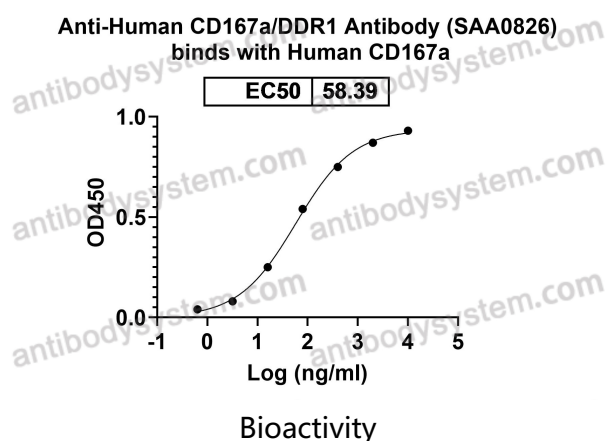
Use a manual defrost freezer and avoid repeated freeze-thaw cycles.

Store at 4°C short term (1-2 weeks). Store at -20°C 12 months. Store at -80°C long term.

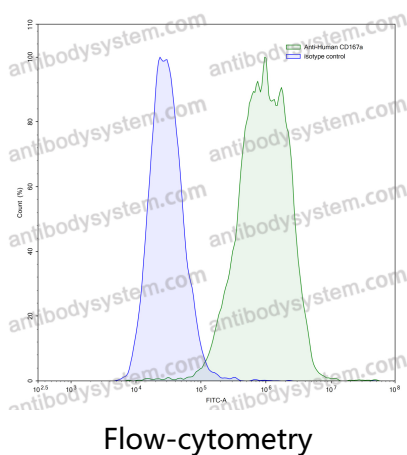
### Note

For research use only.

## Data Image



Detects CD167a/DDR1 in indirect ELISAs.



Flow-cytometry using anti-human CD167a antibody. CD167a Transfected CHO cells were stained with an irrelevant antibody (Blue Histogram) or an anti-human CD167a antibody monoclonal antibody (Catalog # FHG15830, Green Histogram) at a concentration of 5 µg/ml for 30 mins at RT. After washing, bound antibody was detected using a FITC conjugated goat anti-mouse antibody (Catalog # PMB96441) and cells analysed on a NovoCyte Flow Cytometer.