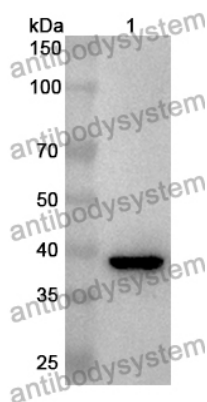


Anti-Human RPS6KA3 Polyclonal Antibody

Summary

Catalog No.	PHE88001
Host species	Rabbit
Tested applications	ELISA: 1:4000-1:8000, IHC: 1:50-1:100, WB: 1:1000-1:4000
Species reactivity	Human
Immunogen	E. coli - derived recombinant Human RPS6KA3 (Asp64-Arg383).
Form	Liquid
Storage buffer	0.01M PBS, pH 7.4, 50% Glycerol, 0.05% Proclin 300.
Clonality	Polyclonal
Isotype	IgG
Applications	ELISA, IHC, WB
Target	Insulin-stimulated protein kinase 1, MAP kinase-activated protein kinase 1b, ISPK-1, RSK2, Ribosomal S6 kinase 2, MAPKAPK-1b, ISPK1, pp90RSK2, p90RSK3, RSK-2, 90 kDa ribosomal protein S6 kinase 3, MAPKAPK1B, S6K-alpha-3, MAPKAP kinase 1b, p90-RSK 3, RPS6KA3, MAPK-activated protein kinase 1b, Ribosomal protein S6 kinase alpha-3
Purification	Purified by antigen affinity column.
Accession	P51812
Stability and Storage	Use a manual defrost freezer and avoid repeated freeze thaw cycles. Store at 2 to 8°C for frequent use. Store at -20 to -80°C for twelve months from the date of receipt.
Note	For research use only.

Data Image



Western Blot

Recombinant Protein lysates were subjected to SDS PAGE followed by western blot with RPS6KA3 antibody (PHE88001) at 1 μ g/ml.

Lane 1: Recombinant protein

Second Ab: Goat Anti-Rabbit IgG H&L Polyclonal antibody, HRP (PTB96431) at 0.1 μ g/mL.

Predict MW: 39 kDa

Observed MW: 39 kDa