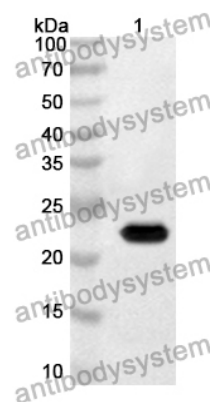


Anti-Human ATP6V0A1 Polyclonal Antibody

Summary

Catalog No.	PHK73301
Host species	Rabbit
Tested applications	ELISA: 1:4000-1:8000, IHC: 1:50-1:100, WB: 1:1000-1:4000
Species reactivity	Human
Immunogen	E. coli - derived recombinant Human ATP6V0A1 (Arg167-Arg241).
Form	Liquid
Storage buffer	0.01M PBS, pH 7.4, 50% Glycerol, 0.05% Proclin 300.
Clonality	Polyclonal
Isotype	IgG
Applications	ELISA, IHC, WB
Target	V-ATPase 116 kDa subunit a1, Vacuolar proton translocating ATPase 116 kDa subunit a isoform 1, ATP6V0A1, V-type proton ATPase 116 kDa subunit a1, ATP6N1, Vacuolar proton pump subunit 1, VPP1, Vacuolar adenosine triphosphatase subunit Ac116, Clathrin-coated vesicle/synaptic vesicle proton pump 116 kDa subunit, ATP6N1A
Purification	Purified by antigen affinity column.
Accession	Q93050
Stability and Storage	Use a manual defrost freezer and avoid repeated freeze thaw cycles. Store at 2 to 8°C for frequent use. Store at -20 to -80°C for twelve months from the date of receipt.
Note	For research use only.

Data Image



Western Blot

Recombinant Protein lysates were subjected to SDS PAGE followed by western blot with ATP6V0A1 antibody (PHK73301) at 1 μ g/ml.

Lane 1: Recombinant protein

Second Ab: Goat Anti-Rabbit IgG H&L Polyclonal antibody, HRP (PTB96431) at 0.1 μ g/mL.

Predict MW: 22 kDa

Observed MW: 22 kDa