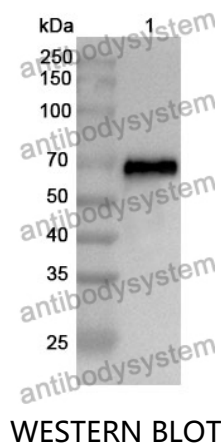


Anti-CYP11B1 Polyclonal Antibody

Summary

Catalog No.	PHD12101
Host species	Rabbit
Tested applications	ELISA: 1:4000-1:8000, IHC: 1:50-1:100, WB: 1:1000-1:4000
Species reactivity	Human
Immunogen	E. coli - derived recombinant Human CYP11B1 (Gly134-Asn503).
Form	Liquid
Storage buffer	0.01M PBS, pH 7.4, 50% Glycerol, 0.05% Proclin 300.
Clonality	Polyclonal
Isotype	IgG
Applications	ELISA, IHC, WB
Target	CYP11B1,Cytochrome P-450c11,Steroid 11-beta-hydroxylase,CYP11B1,Cytochrome P450C11,CYPXIB1,Cytochrome P450 11B1,mitochondrial,S11BH
Purification	Purified by antigen affinity column.
Accession	P15538
Stability and Storage	Use a manual defrost freezer and avoid repeated freeze thaw cycles. Store at 2 to 8°C for frequent use. Store at -20 to -80°C for twelve months from the date of receipt.
Note	For research use only.

Data Image



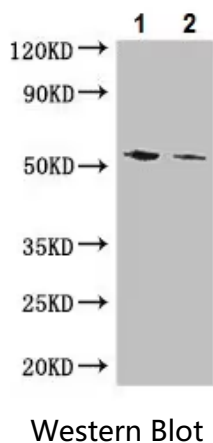
Recombinant Protein lysates were subjected to SDS PAGE followed by western blot with CYP11B1 antibody (PHD12101) at 1 µg/ml.

Lane 1: Recombinant protein

Second Ab: Goat Anti-Rabbit IgG H&L Polyclonal antibody, HRP (PTB96431) at 0.1 µg/mL.

Predict MW: 69 kDa

Observed MW: 69 kDa



Various lysates were subjected to SDS PAGE followed by western blot with CYP11B1 antibody (PHD12101) at 1 µg/ml.

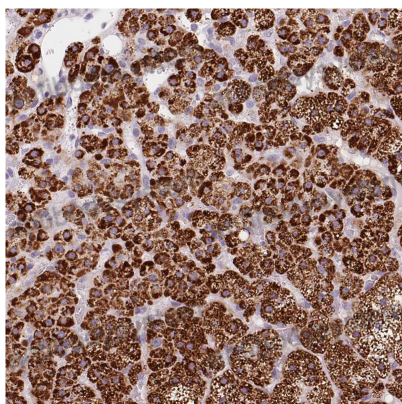
Lane 1: Mouse heart

Lane 2: Mouse kidney

Second Ab: Goat Anti-Rabbit IgG H&L Polyclonal antibody, HRP (PTB96431) at 0.1 µg/mL.

Predict MW: 58 kDa

Observed MW: 58 kDa



Immunohistochemical

Immunohistochemical analysis of human adrenal gland stained for CYP11B1 with PHD12101.