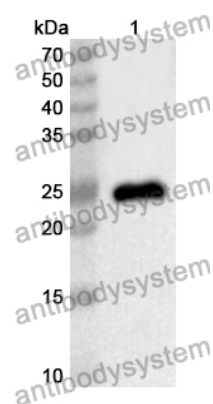


Anti-Escherichia coli eae/Intimin Polyclonal Antibody

Summary

Catalog No.	PXX09901
Host species	Rabbit
Tested applications	ELISA: 1:4000-1:8000, IHC: 1:50-1:200, WB: 1:1000-1:4000
Species reactivity	Escherichia coli O127:H6 (strain E2348/69 / EPEC)
Immunogen	E. coli - derived recombinant Escherichia coli eae/Intimin (Lys450-Gln655).
Form	Liquid
Storage buffer	0.01M PBS, pH 7.4, 50% Glycerol, 0.05% Proclin 300.
Concentration	1.7 mg/ml
Clonality	Polyclonal
Isotype	IgG
Applications	ELISA, IHC, WB
Target	Intimin, Attaching and effacing protein, Eae protein, eae, eaeA, E2348C_3939
Purification	Purified by antigen affinity column.
Accession	P19809
Stability and Storage	Use a manual defrost freezer and avoid repeated freeze thaw cycles. Store at 2 to 8°C for frequent use. Store at -20 to -80°C for twelve months from the date of receipt.
Note	For research use only.

Data Image



Western Blot

Recombinant Protein lysates were subjected to SDS PAGE followed by western blot with eae/Intimin antibody (PXX09901) at 1 μ g/ml.

Lane 1: Recombinant protein

Second Ab: Goat Anti-Rabbit IgG H&L Polyclonal antibody, HRP (PTB96431) at 0.1 μ g/mL.

Predict MW: 25 kDa

Observed MW: 25 kDa