

Anti-Human SSRP1 Polyclonal Antibody

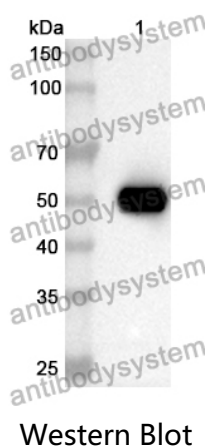
Summary

Catalog No.	PHG18101
Host species	Rabbit
Tested applications	ELISA: 1:4000-1:8000, IHC: 1:50-1:100, WB: 1:1000-1:4000
Species reactivity	Human
Immunogen	E. coli - derived recombinant Human SSRP1 (Met1-Lys422).
Form	Liquid
Storage buffer	0.01M PBS, pH 7.4, 50% Glycerol, 0.05% Proclin 300.
Clonality	Polyclonal
Isotype	IgG
Applications	ELISA, IHC, WB
Target	Recombination signal sequence recognition protein 1, SSRP1, FACT 80 kDa subunit, Chromatin-specific transcription elongation factor 80 kDa subunit, T160, FACT complex subunit SSRP1, FACTp80, FACT80, Structure-specific recognition protein 1, hSSRP1, Facilitates chromatin transcription complex subunit SSRP1, Facilitates chromatin transcription complex 80 kDa subunit
Purification	Purified by antigen affinity column.
Accession	Q08945
Stability and Storage	Use a manual defrost freezer and avoid repeated freeze thaw cycles. Store at 2 to 8°C for frequent use. Store at -20 to -80°C for twelve months from the date of receipt.

Note

For research use only.

Data Image



Recombinant Protein lysates were subjected to SDS PAGE followed by western blot with SSRP1 antibody (PHG18101) at 1 µg/ml.

Lane 1: Recombinant protein

Second Ab: Goat Anti-Rabbit IgG H&L Polyclonal antibody, HRP (PTB96431) at 0.1 µg/mL.

Predict MW: 51 kDa

Observed MW: 51 kDa