

Anti-Human SET Polyclonal Antibody

Summary

Catalog No.	PHF85501
Host species	Rabbit
Tested applications	ELISA: 1:4000-1:8000, IHC: 1:50-1:100, WB: 1:1000-1:4000
Species reactivity	Human
Immunogen	E. coli - derived recombinant Human SET (Lys90-Asn228).
Form	Liquid
Storage buffer	0.01M PBS, pH 7.4, 50% Glycerol, 0.05% Proclin 300.
Clonality	Polyclonal
Isotype	IgG
Applications	ELISA, IHC, WB
Target	Protein SET, Phosphatase 2A inhibitor I2PP2A, SET, HLA-DR-associated protein II, PHAPII, TAF-I, I-2PP2A, Inhibitor of granzyme A-activated DNase, IGAAD, Template-activating factor I
Purification	Purified by antigen affinity column.
Accession	Q01105
Stability and Storage	Use a manual defrost freezer and avoid repeated freeze thaw cycles. Store at 2 to 8°C for frequent use. Store at -20 to -80°C for twelve months from the date of receipt.
Note	For research use only.

Data Image

Various lysates were subjected to SDS PAGE followed by western blot with SET antibody (PHF85501) at 1 μ g/ml.

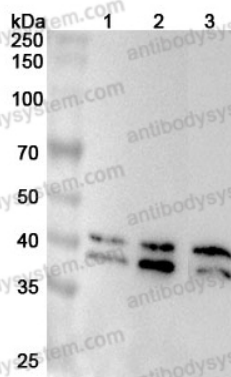
Lane 1: Hela cell lysate

Lane 2: HepG2 cell lysate

Lane 3: NIH3T3 cell lysate

Second Ab: Goat Anti-Rabbit IgG H&L

Polyclonal antibody, HRP (PTB96431) at 0.1 μ g/mL.



Western Blot

Predict MW: 33 kDa

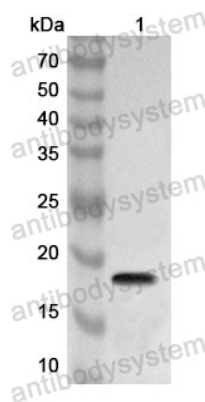
Observed MW: 39,41 kDa

Recombinant Protein lysates were subjected to SDS PAGE followed by western blot with SET antibody (PHF85501) at 1 μ g/ml.

Lane 1: Recombinant Protein

Second Ab: Goat Anti-Rabbit IgG H&L

Polyclonal antibody, HRP (PTB96431) at 0.1 μ g/mL.



Western Blot

Predict MW: 19 kDa

Observed MW: 19 kDa