

Research Grade Glofitamab

Summary

Catalog No.	DHC90714
Alternative Names	Bispecific, CD20-TCB (2:1), RG-6026, CAS: 2229047-91-8
Clone ID	Glofitamab
Host species	Humanized
Species reactivity	Human
Form	Liquid
Storage buffer	0.01M PBS, pH 7.4.
Concentration	1.06 mg/ml
Purity	>95% as determined by SDS-PAGE.
Clonality	Monoclonal
Isotype	IgG1-kappa-lambda
Applications	Research Grade Biosimilar
Target	B-lymphocyte surface antigen B1, Membrane-spanning 4-domains subfamily A member 1, MS4A1, Leukocyte surface antigen Leu-16, B-lymphocyte antigen CD20, Bp35, CD20, T3E, T-cell surface antigen T3/Leu-4 epsilon chain, CD3e, CD3E, T-cell surface glycoprotein CD3 epsilon chain
Purification	Protein A/G purified from cell culture supernatant.
Endotoxin level	Please contact with the lab for this information.
Expression system	Mammalian Cells
Accession	P11836 & P07766

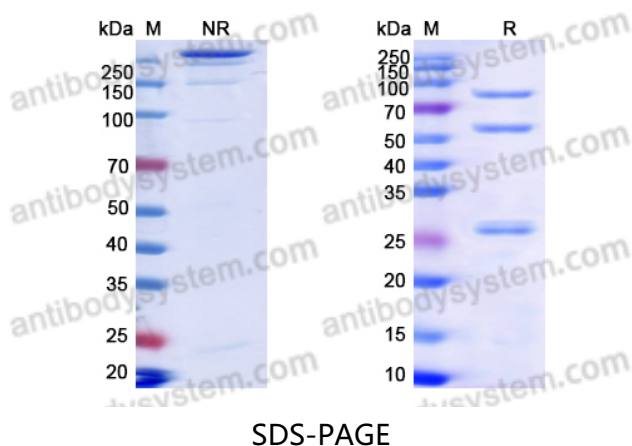
Stability and Storage Use a manual defrost freezer and avoid repeated freeze-thaw cycles.
Store at 4°C short term (1-2 weeks). Store at -20°C 12 months. Store at -80°C long term.

Note For research use only. Not suitable for clinical or therapeutic use.

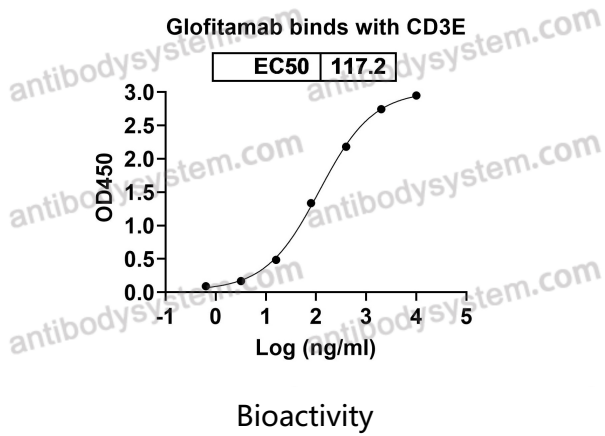
Description

Glofitamab is a T-cell-engaging bispecific antibody possessing a novel 2:1 structure with bivalency for CD20 on B cells and monovalency for CD3 on T cells. Glofitamab is an investigational, T-cell bispecific antibody with a distinctive design that features 2 Fab arms for binding CD20 on B cells, along with 1 Fab arm for binding CD3 on T cells. The CD3 binding arm is fused directly to one of the CD20-binding arms in a head-to-tail fashion via a short flexible linker.

Data Image



SDS PAGE for Glofitamab



Detects CD3E in indirect ELISAs.