

Anti-Human MZB1 Polyclonal Antibody

Summary

Catalog No.	PHK68501
Host species	Rabbit
Tested applications	ELISA: 1:4000-1:8000, IHC: 1:50-1:100, WB: 1:1000-1:4000
Species reactivity	Human
Immunogen	E. coli - derived recombinant Human MZB1 (Asp36-Gly172).
Form	Liquid
Storage buffer	0.01M PBS, pH 7.4, 50% Glycerol, 0.05% Proclin 300.
Clonality	Polyclonal
Isotype	IgG
Applications	ELISA, IHC, WB
Target	Mesenteric estrogen-dependent adipose 7, Marginal zone B- and B1-cell-specific protein, Plasma cell-induced resident ER protein, PACAP, MZB1, Proapoptotic caspase adapter protein, Plasma cell-induced resident endoplasmic reticulum protein, pERp1, MEDA-7, MEDA7
Purification	Purified by antigen affinity column.
Accession	Q8WU39
Stability and Storage	Use a manual defrost freezer and avoid repeated freeze thaw cycles. Store at 2 to 8°C for frequent use. Store at -20 to -80°C for twelve months from the date of receipt.
Note	For research use only.

Data Image

Various lysates were subjected to SDS PAGE followed by western blot with MZB1 antibody (PHK68501) at 1 μ g/ml.

Lane 1: Raji cell lysate

Lane 2: Daudi cell lysate

Second Ab: Goat Anti-Rabbit IgG H&L Polyclonal antibody, HRP (PTB96431) at 0.1 μ g/mL.

Predict MW: 21 kDa

Observed MW: 18 kDa

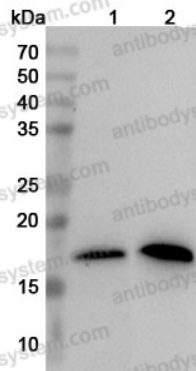
Recombinant Protein lysates were subjected to SDS PAGE followed by western blot with MZB1 antibody (PHK68501) at 1 μ g/ml.

Lane 1: Recombinant Protein

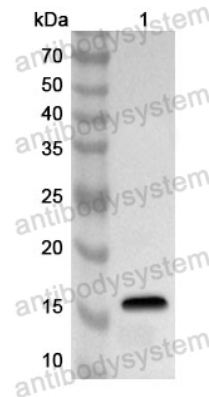
Second Ab: Goat Anti-Rabbit IgG H&L Polyclonal antibody, HRP (PTB96431) at 0.1 μ g/mL.

Predict MW: 18 kDa

Observed MW: 18 kDa



Western Blot



Western Blot