

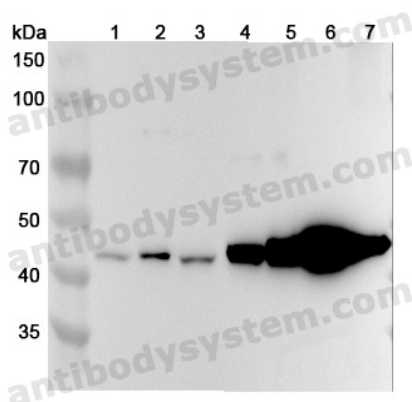
Anti-Human CNP Polyclonal Antibody

Summary

Catalog No.	PHC41601
Host species	Rabbit
Tested applications	ELISA: 1:4000-1:8000, IHC: 1:50-1:100, WB: 1:1000-1:4000
Species reactivity	Human
Immunogen	E. coli - derived recombinant Human CNP (Glu40-Gly396).
Form	Liquid
Storage buffer	0.01M PBS, pH 7.4, 50% Glycerol, 0.05% Proclin 300.
Clonality	Polyclonal
Isotype	IgG
Applications	ELISA, IHC, WB
Target	CNPase, 2',3'-cyclic-nucleotide 3'-phosphodiesterase, CNP
Purification	Purified by antigen affinity column.
Accession	P09543
Stability and Storage	Use a manual defrost freezer and avoid repeated freeze thaw cycles. Store at 2 to 8°C for frequent use. Store at -20 to -80°C for twelve months from the date of receipt.
Note	For research use only.

Data Image

Various lysates were subjected to SDS PAGE followed by western blot with CNP antibody (PHC41601) at 1 μ g/ml.



Western Blot

Lane 1: HepG2 cell lysate

Lane 2: U251 cell lysate

Lane 3: Hela cell lysate

Lane 4: Mouse brain lysate

Lane 5: Mouse cerebellum lysate

Lane 6: Rat brain lysate

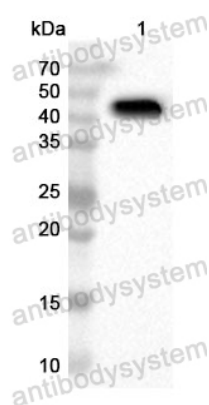
Lane 7: Rat cerebellum lysate

Second Ab: Goat Anti-Rabbit IgG H&L Polyclonal antibody, HRP (PTB96431) at 0.1 μ g/mL.

Predict MW: 48 kDa

Observed MW: 45 kDa

Recombinant Protein lysates were subjected to SDS PAGE followed by western blot with CNP antibody (PHC41601) at 1 μ g/ml.



Western Blot

Lane 1: Recombinant Protein

Second Ab: Goat Anti-Rabbit IgG H&L Polyclonal antibody, HRP (PTB96431) at 0.1 μ g/mL.

Predict MW: 43 kDa

Observed MW: 43 kDa