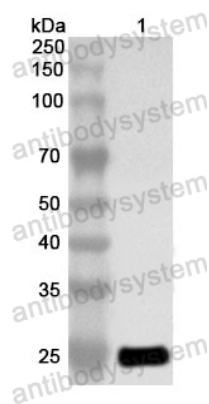


Anti-Human ATF2 Polyclonal Antibody

Summary

Catalog No.	PHD10501
Host species	Rabbit
Tested applications	ELISA: 1:4000-1:8000, IHC: 1:50-1:100, WB: 1:1000-1:4000
Species reactivity	Human
Immunogen	E. coli - derived recombinant Human ATF2 (Lys2-Met107).
Form	Liquid
Storage buffer	0.01M PBS, pH 7.4, 50% Glycerol, 0.05% Proclin 300.
Clonality	Polyclonal
Isotype	IgG
Applications	ELISA, IHC, WB
Target	ATF2, cAMP response element-binding protein CRE-BP1, CREB2, CREBP1, cAMP-responsive element-binding protein 2, cAMP-dependent transcription factor ATF-2, Activating transcription factor 2, HB16, Cyclic AMP-dependent transcription factor ATF-2, CREB-2, Cyclic AMP-responsive element-binding protein 2
Purification	Purified by antigen affinity column.
Accession	P15336
Stability and Storage	Use a manual defrost freezer and avoid repeated freeze thaw cycles. Store at 2 to 8°C for frequent use. Store at -20 to -80°C for twelve months from the date of receipt.
Note	For research use only.

Data Image



Western Blot

Recombinant Protein lysates were subjected to SDS PAGE followed by western blot with ATF2 antibody (PHD10501) at 1 μ g/ml.

Lane 1: Recombinant protein

Second Ab: Goat Anti-Rabbit IgG H&L Polyclonal antibody, HRP (PTB96431) at 0.1 μ g/mL.

Predict MW: 26 kDa

Observed MW: 26 kDa