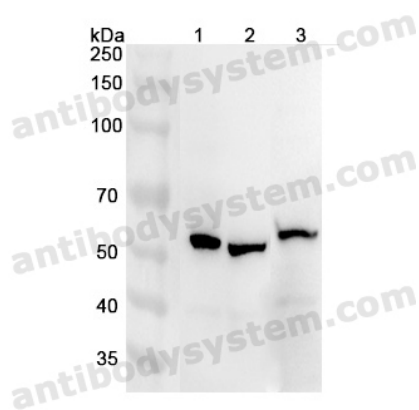


Anti-Human ATP6V1B1 Polyclonal Antibody

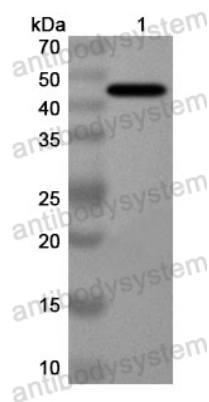
Summary

Catalog No.	PHD10301
Host species	Rabbit
Tested applications	ELISA: 1:4000-1:8000, IHC: 1:50-1:100, WB: 1:1000-1:4000
Species reactivity	Human
Immunogen	E. coli - derived recombinant Human ATP6V1B1 (Asp111-Leu513).
Form	Liquid
Storage buffer	0.01M PBS, pH 7.4, 50% Glycerol, 0.05% Proclin 300.
Clonality	Polyclonal
Isotype	IgG
Applications	ELISA, IHC, WB
Target	ATP6V1B1, Endomembrane proton pump 58 kDa subunit, V-ATPase subunit B 1, Vacuolar proton pump subunit B 1, VPP3, V-type proton ATPase subunit B, kidney isoform, VATB, ATP6B1
Purification	Purified by antigen affinity column.
Accession	P15313
Stability and Storage	Use a manual defrost freezer and avoid repeated freeze thaw cycles. Store at 2 to 8°C for frequent use. Store at -20 to -80°C for twelve months from the date of receipt.
Note	For research use only.

Data Image



Western Blot



Western Blot

Various lysates were subjected to SDS PAGE followed by western blot with ATP6V1B1 antibody (PHD10301) at 1 μ g/ml.

Lane 1: Mouse brain lysate

Lane 2: Mouse kidney lysate

Lane 3: Rat brain lysate

Second Ab: Goat Anti-Rabbit IgG H&L Polyclonal antibody, HRP (PTB96431) at 0.1 μ g/mL.

Predict MW: 56 kDa

Observed MW: 56 kDa

Recombinant Protein lysates were subjected to SDS PAGE followed by western blot with ATP6V1B1 antibody (PHD10301) at 1 μ g/ml.

Lane 1: Recombinant Protein

Second Ab: Goat Anti-Rabbit IgG H&L Polyclonal antibody, HRP (PTB96431) at 0.1 μ g/mL.

Predict MW: 47 kDa

Observed MW: 47 kDa