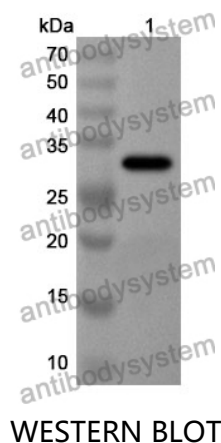


Anti-IDE Polyclonal Antibody

Summary

Catalog No.	PHD06501
Host species	Rabbit
Tested applications	ELISA: 1:4000-1:8000, IHC: 1:50-1:100, WB: 1:1000-1:4000
Species reactivity	Human, Mouse, Rat
Immunogen	E. coli - derived recombinant Human IDE (Ala753-Pro973).
Form	Liquid
Storage buffer	0.01M PBS, pH 7.4, 50% Glycerol, 0.05% Proclin 300.
Clonality	Polyclonal
Isotype	IgG
Applications	ELISA, IHC, WB
Target	Insulysin,IDE,Abeta-degrading protease,Insulin protease,Insulinase,Insulin-degrading enzyme
Purification	Purified by antigen affinity column.
Accession	P14735
Stability and Storage	Use a manual defrost freezer and avoid repeated freeze thaw cycles. Store at 2 to 8°C for frequent use. Store at -20 to -80°C for twelve months from the date of receipt.
Note	For research use only.

Data Image



Recombinant Protein lysates were subjected to SDS PAGE followed by western blot with IDE antibody (PHD06501) at 1 µg/ml.

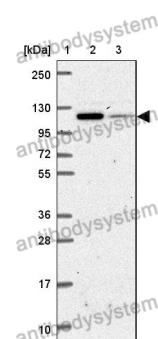
Lane 1: Recombinant protein

Second Ab: Goat Anti-Rabbit IgG H&L Polyclonal antibody, HRP (PTB96431) at 0.1 µg/mL.

Predict MW: 28 kDa

Observed MW: 28 kDa

Various lysates were subjected to SDS PAGE followed by western blot with IDE antibody (PHD06501) at 1 µg/ml.



Lane 1: Marker

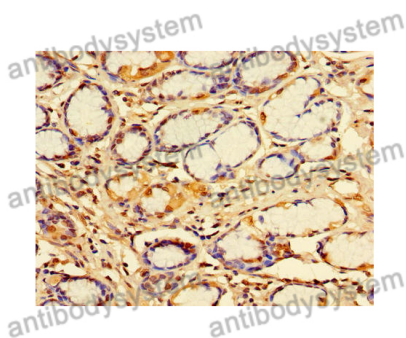
Lane 2: RT-4

Lane 3: U-251 MG

Second Ab: Goat Anti-Rabbit IgG H&L Polyclonal antibody, HRP (PTB96431) at 0.1 µg/mL.

Predict MW: 118 kDa

Observed MW: 118 kDa



Immunohistochemical

Immunohistochemical analysis of human gastric cancer stained for IDE with PHD06501.