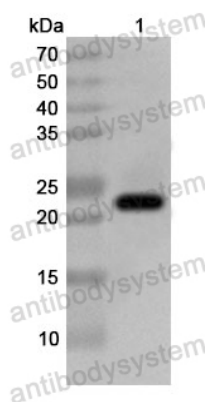


Anti-Human PSIP1 Polyclonal Antibody

Summary

Catalog No.	PHB22001
Host species	Rabbit
Tested applications	ELISA: 1:4000-1:8000, IHC: 1:50-1:100, WB: 1:1000-1:4000
Species reactivity	Human
Immunogen	E. coli - derived recombinant Human PSIP1 (Thr2-Asn87).
Form	Liquid
Storage buffer	0.01M PBS, pH 7.4, 50% Glycerol, 0.05% Proclin 300.
Clonality	Polyclonal
Isotype	IgG
Applications	ELISA, IHC, WB
Target	Transcriptional coactivator p75/p52, CLL-associated antigen KW-7, PSIP1, DFS70, Dense fine speckles 70 kDa protein, DFS 70, PC4 and SFRS1-interacting protein, LEDGF, PSIP2, Lens epithelium-derived growth factor
Purification	Purified by antigen affinity column.
Accession	O75475
Stability and Storage	Use a manual defrost freezer and avoid repeated freeze thaw cycles. Store at 2 to 8°C for frequent use. Store at -20 to -80°C for twelve months from the date of receipt.
Note	For research use only.

Data Image



Western Blot

Recombinant Protein lysates were subjected to SDS PAGE followed by western blot with PSIP1 antibody (PHB22001) at 1 μ g/ml.

Lane 1: Recombinant protein

Second Ab: Goat Anti-Rabbit IgG H&L Polyclonal antibody, HRP (PTB96431) at 0.1 μ g/mL.

Predict MW: 22 kDa

Observed MW: 22 kDa