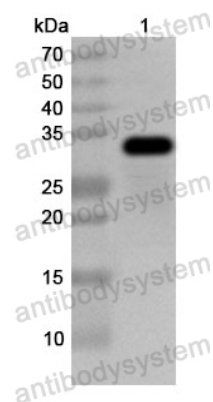


Anti-Human PPM1K Polyclonal Antibody

Summary

Catalog No.	PHK64701
Host species	Rabbit
Tested applications	ELISA: 1:4000-1:8000, IHC: 1:50-1:100, WB: 1:1000-1:4000
Species reactivity	Human
Immunogen	E. coli - derived recombinant Human PPM1K (Ser91-Ala372).
Form	Liquid
Storage buffer	0.01M PBS, pH 7.4, 50% Glycerol, 0.05% Proclin 300.
Clonality	Polyclonal
Isotype	IgG
Applications	ELISA, IHC, WB
Target	PP2C-type mitochondrial phosphoprotein phosphatase, PP2C-like mitochondrial protein, Protein phosphatase 1K, mitochondrial, PP2CM, PP2C-kappa, PPM1K, PTMP, Protein phosphatase 2C isoform kappa, PP2C domain-containing protein phosphatase 1K
Purification	Purified by antigen affinity column.
Accession	Q8N3J5
Stability and Storage	Use a manual defrost freezer and avoid repeated freeze thaw cycles. Store at 2 to 8°C for frequent use. Store at -20 to -80°C for twelve months from the date of receipt.
Note	For research use only.

Data Image



Western Blot

Recombinant Protein lysates were subjected to SDS PAGE followed by western blot with PPM1K antibody (PHK64701) at 1 μ g/ml.

Lane 1: Recombinant protein

Second Ab: Goat Anti-Rabbit IgG H&L Polyclonal antibody, HRP (PTB96431) at 0.1 μ g/mL.

Predict MW: 33 kDa

Observed MW: 33 kDa