

# Anti-Human SEC13 Polyclonal Antibody

## Summary

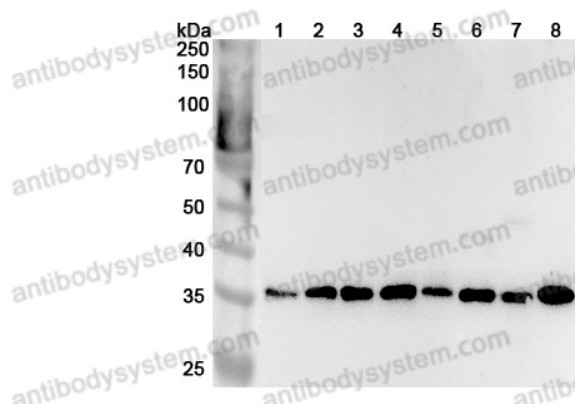
---

<b>Catalog No.</b>	PHF13101
<b>Host species</b>	Rabbit
<b>Tested applications</b>	ELISA: 1:4000-1:8000, IHC: 1:50-1:100, WB: 1:1000-1:4000
<b>Species reactivity</b>	Human
<b>Immunogen</b>	E. coli - derived recombinant Human SEC13 (Met15-Gln322).
<b>Form</b>	Liquid
<b>Storage buffer</b>	0.01M PBS, pH 7.4, 50% Glycerol, 0.05% Proclin 300.
<b>Clonality</b>	Polyclonal
<b>Isotype</b>	IgG
<b>Applications</b>	ELISA, IHC, WB
<b>Target</b>	D3S1231E, SEC13L1, SEC13, SEC13-like protein 1, SEC13-related protein, Protein SEC13 homolog, SEC13R, GATOR complex protein SEC13, SEC13A
<b>Purification</b>	Purified by antigen affinity column.
<b>Accession</b>	P55735
<b>Stability and Storage</b>	Use a manual defrost freezer and avoid repeated freeze thaw cycles. Store at 2 to 8°C for frequent use. Store at -20 to -80°C for twelve months from the date of receipt.
<b>Note</b>	For research use only.

## Data Image

---

Various lysates were subjected to SDS PAGE followed by western blot with SEC13 antibody (PHF13101) at 1µg/ml.



Western Blot

Lane 1: RAW264.7 cell lysate

Lane 2: HepG2 cell lysate

Lane 3: Hela cell lysate

Lane 4: U87 cell lysate

Lane 5: 293T cell lysate

Lane 6: MCF-7 cell lysate

Lane 7: Mouse kidney lysate

Lane 8: Mouse liver lysate

Second Ab: Goat Anti-Rabbit IgG H&L Polyclonal antibody, HRP (PTB96431) at 0.1 µg/mL.

Predict MW: 36 kDa

Observed MW: 36 kDa