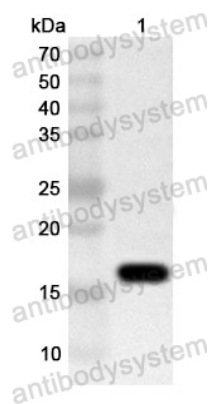


Anti-Human PLEKHO1 Polyclonal Antibody

Summary

Catalog No.	PHH88701
Host species	Rabbit
Tested applications	ELISA: 1:4000-1:8000, IHC: 1:50-1:100, WB: 1:1000-1:4000
Species reactivity	Human
Immunogen	E. coli - derived recombinant Human PLEKHO1 (Glu23-Thr143).
Form	Liquid
Storage buffer	0.01M PBS, pH 7.4, 50% Glycerol, 0.05% Proclin 300.
Clonality	Polyclonal
Isotype	IgG
Applications	ELISA, IHC, WB
Target	PH domain-containing family O member 1, CK2-interacting protein 1, Osteoclast maturation-associated gene 120 protein, OC120, JBP, Casein kinase 2-interacting protein 1, C-Jun-binding protein, CKIP1, PLEKHO1, CKIP-1, Pleckstrin homology domain-containing family O member 1
Purification	Purified by antigen affinity column.
Accession	Q53GL0
Stability and Storage	Use a manual defrost freezer and avoid repeated freeze thaw cycles. Store at 2 to 8°C for frequent use. Store at -20 to -80°C for twelve months from the date of receipt.
Note	For research use only.

Data Image



Western Blot

Recombinant Protein lysates were subjected to SDS PAGE followed by western blot with PLEKHO1 antibody (PHH88701) at 1 μ g/ml.

Lane 1: Recombinant protein

Second Ab: Goat Anti-Rabbit IgG H&L Polyclonal antibody, HRP (PTB96431) at 0.1 μ g/mL.

Predict MW: 16 kDa

Observed MW: 16 kDa