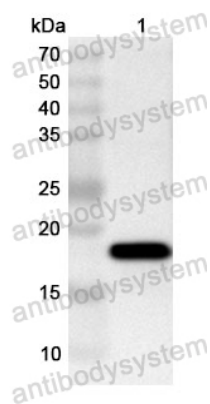


Anti-Human SLC17A1 Polyclonal Antibody

Summary

Catalog No.	PHG92101
Host species	Rabbit
Tested applications	ELISA: 1:4000-1:8000, IHC: 1:50-1:100, WB: 1:1000-1:4000
Species reactivity	Human
Immunogen	E. coli - derived recombinant Human SLC17A1 (Ala211-Ser261).
Form	Liquid
Storage buffer	0.01M PBS, pH 7.4, 50% Glycerol, 0.05% Proclin 300.
Clonality	Polyclonal
Isotype	IgG
Applications	ELISA, IHC, WB
Target	NPT1, Renal sodium-phosphate transport protein 1, Renal sodium-dependent phosphate transport protein 1, Sodium-dependent phosphate transport protein 1, Renal Na(+)-dependent phosphate cotransporter 1, Sodium/phosphate cotransporter 1, Na(+)/PI cotransporter 1, Solute carrier family 17 member 1, Na/Pi-4, SLC17A1
Purification	Purified by antigen affinity column.
Accession	Q14916
Stability and Storage	Use a manual defrost freezer and avoid repeated freeze thaw cycles. Store at 2 to 8°C for frequent use. Store at -20 to -80°C for twelve months from the date of receipt.
Note	For research use only.

Data Image



Western Blot

Recombinant Protein lysates were subjected to SDS PAGE followed by western blot with SLC17A1 antibody (PHG92101) at 1 μ g/ml.

Lane 1: Recombinant protein

Second Ab: Goat Anti-Rabbit IgG H&L Polyclonal antibody, HRP (PTB96431) at 0.1 μ g/mL.

Predict MW: 18 kDa

Observed MW: 18 kDa