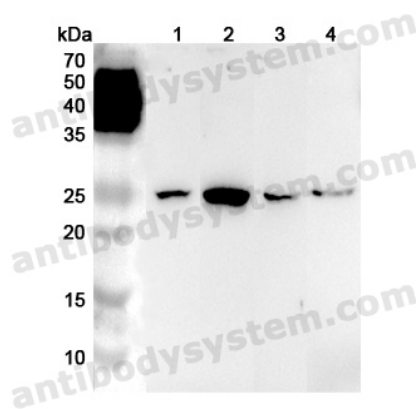


Anti-Human LYPLA1 Polyclonal Antibody

Summary

Catalog No.	PHB26501
Host species	Rabbit
Tested applications	ELISA: 1:4000-1:8000, IHC: 1:50-1:100, WB: 1:1000-1:4000
Species reactivity	Human
Immunogen	E. coli - derived recombinant Human LYPLA1 (Met1-Asp230).
Form	Liquid
Storage buffer	0.01M PBS, pH 7.4, 50% Glycerol, 0.05% Proclin 300.
Clonality	Polyclonal
Isotype	IgG
Applications	ELISA, IHC, WB
Target	APT1, LYPLA1, LPL-I, Lysophospholipase I, LysoPLA I, LPL1, hAPT1, Acyl-protein thioesterase 1, APT-1, Lysophospholipase 1
Purification	Purified by antigen affinity column.
Accession	O75608
Stability and Storage	Use a manual defrost freezer and avoid repeated freeze thaw cycles. Store at 2 to 8°C for frequent use. Store at -20 to -80°C for twelve months from the date of receipt.
Note	For research use only.

Data Image



Western Blot

Various lysates were subjected to SDS PAGE followed by western blot with LYPLA1 antibody (PHB26501) at 1 μ g/ml.

Lane 1: Mouse liver lysate

Lane 2: Mouse kidney lysate

Lane 3: Rat liver lysate

Lane 4: Rat kidney lysate

Second Ab: Goat Anti-Rabbit IgG H&L Polyclonal antibody, HRP (PTB96431) at 0.1 μ g/mL.

Predict MW: 25 kDa

Observed MW: 25 kDa