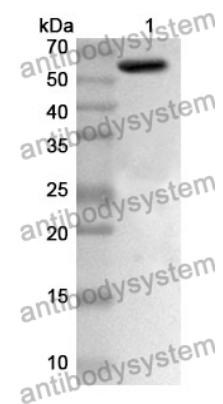


Anti-PKM Polyclonal Antibody

Summary

Catalog No.	PHD05401
Host species	Rabbit
Tested applications	ELISA: 1:4000-1:8000, IHC: 1:50-1:100, WB: 1:1000-1:4000
Species reactivity	Human, Mouse, Rat
Immunogen	E. coli - derived recombinant Human PKM (Met1-Pro531).
Form	Liquid
Storage buffer	0.01M PBS, pH 7.4, 50% Glycerol, 0.05% Proclin 300.
Clonality	Polyclonal
Isotype	IgG
Applications	ELISA, IHC, WB
Target	PK2,Opa-interacting protein 3,THBP1,Tumor M2-PK,PKM,Pyruvate kinase muscle isozyme,Thyroid hormone-binding protein 1,PK3,Pyruvate kinase 2/3,p58,CTHBP,PKM2,Pyruvate kinase PKM,OIP-3,Cytosolic thyroid hormone-binding protein,OIP3
Purification	Purified by antigen affinity column.
Accession	P14618
Stability and Storage	Use a manual defrost freezer and avoid repeated freeze thaw cycles. Store at 2 to 8°C for frequent use. Store at -20 to -80°C for twelve months from the date of receipt.
Note	For research use only.

Data Image



WESTERN BLOT

Recombinant Protein lysates were subjected to SDS PAGE followed by western blot with PKM antibody (PHD05401) at 1 μ g/ml.

Lane 1: Recombinant protein

Second Ab: Goat Anti-Rabbit IgG H&L Polyclonal antibody, HRP (PTB96431) at 0.1 μ g/mL.

Predict MW: 60 kDa

Observed MW: 60 kDa