

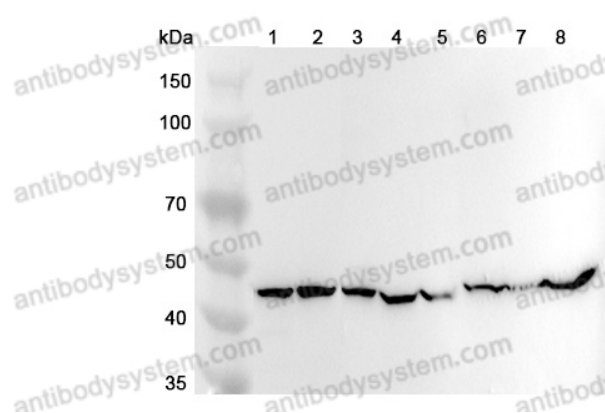
Anti-Human TUFM Polyclonal Antibody

Summary

Catalog No.	PHE65201
Host species	Rabbit
Tested applications	ELISA: 1:4000-1:8000, IHC: 1:50-1:100, WB: 1:1000-1:4000
Species reactivity	Human
Immunogen	E. coli - derived recombinant Human TUFM (Asp67-Gly452).
Form	Liquid
Storage buffer	0.01M PBS, pH 7.4, 50% Glycerol, 0.05% Proclin 300.
Clonality	Polyclonal
Isotype	IgG
Applications	ELISA, IHC, WB
Target	P43, Elongation factor Tu, mitochondrial, TUFM, EF-Tu
Purification	Purified by antigen affinity column.
Accession	P49411
Stability and Storage	Use a manual defrost freezer and avoid repeated freeze thaw cycles. Store at 2 to 8°C for frequent use. Store at -20 to -80°C for twelve months from the date of receipt.
Note	For research use only.

Data Image

Various lysates were subjected to SDS PAGE followed by western blot with TUFM antibody (PHE65201) at 1 μ g/ml.



Western Blot

Lane 1: HepG2 cell lysate

Lane 2: K562 cell lysate

Lane 3: Mouse brain lysate

Lane 4: Mouse kidney lysate

Lane 5: Mouse liver lysate

Lane 6: Rat brain lysate

Lane 7: Rat kidney lysate

Lane 8: Rat liver lysate

Second Ab: Goat Anti-Rabbit IgG H&L Polyclonal antibody, HRP (PTB96431) at 0.1 μ g/mL.

Predict MW: 50 kDa

Observed MW: 46 kDa