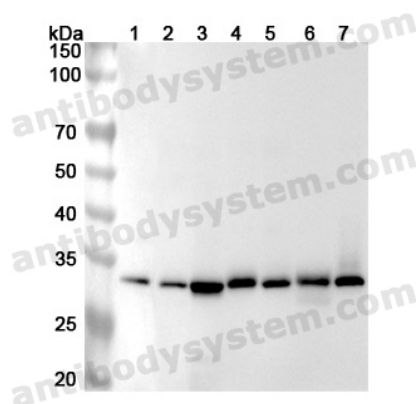


Anti-Human RPA2 Polyclonal Antibody

Summary

Catalog No.	PHD14101
Host species	Rabbit
Tested applications	ELISA: 1:4000-1:8000, IHC: 1:50-1:100, WB: 1:1000-1:4000
Species reactivity	Human
Immunogen	E. coli - derived recombinant Human RPA2 (Thr50-Glu270).
Form	Liquid
Storage buffer	0.01M PBS, pH 7.4, 50% Glycerol, 0.05% Proclin 300.
Concentration	1.12 mg/ml
Clonality	Polyclonal
Isotype	IgG
Applications	ELISA, IHC, WB
Target	RPA34, Replication protein A 34 kDa subunit, Replication protein A 32 kDa subunit, RF-A protein 2, RP-A p34, Replication factor A protein 2, REPA2, RPA2, RPA32, RP-A p32
Purification	Purified by antigen affinity column.
Accession	P15927
Stability and Storage	Use a manual defrost freezer and avoid repeated freeze thaw cycles. Store at 2 to 8°C for frequent use. Store at -20 to -80°C for twelve months from the date of receipt.
Note	For research use only.

Data Image



Western Blot

Various lysates were subjected to SDS PAGE followed by western blot with RPA2 antibody (PHD14101) at 1 μ g/ml.

Lane 1: NIH3T3 cell lysate

Lane 2: Hela cell lysate

Lane 3: Jurkat cell lysate

Lane 4: Molt-4 cell lysate

Lane 5: THP-1 cell lysate

Lane 6: Lncap cell lysate

Lane 7: 293T cell lysate

Second Ab: Goat Anti-Rabbit IgG H&L Polyclonal antibody, HRP (PTB96431) at 0.1 μ g/mL.

Predict MW: 30 kDa

Observed MW: 30 kDa