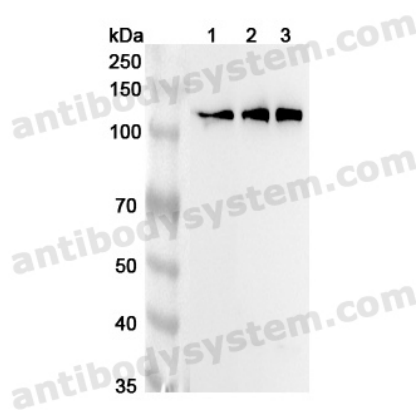


Anti-Human KIF5C Polyclonal Antibody

Summary

Catalog No.	PHA86201
Host species	Rabbit
Tested applications	ELISA: 1:4000-1:8000, IHC: 1:50-1:100, WB: 1:1000-1:4000
Species reactivity	Human
Immunogen	E. coli - derived recombinant Human KIF5C (Met1-Thr330).
Form	Liquid
Storage buffer	0.01M PBS, pH 7.4, 50% Glycerol, 0.05% Proclin 300.
Clonality	Polyclonal
Isotype	IgG
Applications	ELISA, IHC, WB
Target	Kinesin heavy chain isoform 5C, KIAA0531, KIF5C, Kinesin heavy chain neuron-specific 2, NKHC2
Purification	Purified by antigen affinity column.
Accession	O60282
Stability and Storage	Use a manual defrost freezer and avoid repeated freeze thaw cycles. Store at 2 to 8°C for frequent use. Store at -20 to -80°C for twelve months from the date of receipt.
Note	For research use only.

Data Image



Western Blot

Various lysates were subjected to SDS PAGE followed by western blot with KIF5C antibody (PHA86201) at 1 μ g/ml.

Lane 1: Mouse brain lysate

Lane 2: Rat cerebellum lysate

Lane 3: Rat brain lysate

Second Ab: Goat Anti-Rabbit IgG H&L Polyclonal antibody, HRP (PTB96431) at 0.1 μ g/mL.

Predict MW: 110 kDa

Observed MW: 110 kDa