

# Anti-Human RBBP7 Polyclonal Antibody

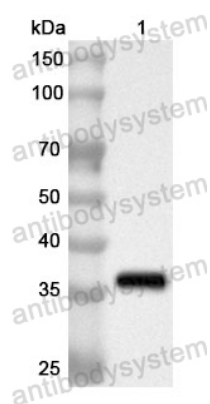
## Summary

---

<b>Catalog No.</b>	PHH30001
<b>Host species</b>	Rabbit
<b>Tested applications</b>	ELISA: 1:4000-1:8000, IHC: 1:50-1:100, WB: 1:1000-1:4000
<b>Species reactivity</b>	Human
<b>Immunogen</b>	E. coli - derived recombinant Human RBBP7 (Ile120-Ser425).
<b>Form</b>	Liquid
<b>Storage buffer</b>	0.01M PBS, pH 7.4, 50% Glycerol, 0.05% Proclin 300.
<b>Clonality</b>	Polyclonal
<b>Isotype</b>	IgG
<b>Applications</b>	ELISA, IHC, WB
<b>Target</b>	Nucleosome-remodeling factor subunit RBAP46, Histone-binding protein RBBP7, RBAP46, Retinoblastoma-binding protein 7, Histone acetyltransferase type B subunit 2, Retinoblastoma-binding protein p46, RBBP-7, RBBP7
<b>Purification</b>	Purified by antigen affinity column.
<b>Accession</b>	Q16576
<b>Stability and Storage</b>	Use a manual defrost freezer and avoid repeated freeze thaw cycles. Store at 2 to 8°C for frequent use. Store at -20 to -80°C for twelve months from the date of receipt.
<b>Note</b>	For research use only.

## Data Image

---



Western Blot

Recombinant Protein lysates were subjected to SDS PAGE followed by western blot with RBBP7 antibody (PHH30001) at 1  $\mu$ g/ml.

Lane 1: Recombinant protein

Second Ab: Goat Anti-Rabbit IgG H&L Polyclonal antibody, HRP (PTB96431) at 0.1  $\mu$ g/mL.

Predict MW: 36 kDa

Observed MW: 36 kDa