

# Anti-Human CELF2 Polyclonal Antibody

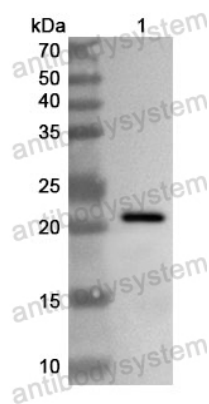
## Summary

---

<b>Catalog No.</b>	PHB61001
<b>Host species</b>	Rabbit
<b>Tested applications</b>	ELISA: 1:4000-1:8000, IHC: 1:50-1:100, WB: 1:1000-1:4000
<b>Species reactivity</b>	Human
<b>Immunogen</b>	E. coli - derived recombinant Human CELF2 (Lys41-Asp211).
<b>Form</b>	Liquid
<b>Storage buffer</b>	0.01M PBS, pH 7.4, 50% Glycerol, 0.05% Proclin 300.
<b>Clonality</b>	Polyclonal
<b>Isotype</b>	IgG
<b>Applications</b>	ELISA, IHC, WB
<b>Target</b>	CELF-2, hNAPOR, Neuroblastoma apoptosis-related RNA-binding protein, CUGBP Elav-like family member 2, CUG-BP- and ETR-3-like factor 2, BRUNOL3, NAPOR, ETR3, CUGBP2, CUG triplet repeat RNA-binding protein 2, ETR-3, CELF2, ELAV-type RNA-binding protein 3, RNA-binding protein BRUNOL-3, Bruno-like protein 3, CUG-BP2
<b>Purification</b>	Purified by antigen affinity column.
<b>Accession</b>	O95319
<b>Stability and Storage</b>	Use a manual defrost freezer and avoid repeated freeze thaw cycles. Store at 2 to 8°C for frequent use. Store at -20 to -80°C for twelve months from the date of receipt.
<b>Note</b>	For research use only.

## Data Image

---



Western Blot

Recombinant Protein lysates were subjected to SDS PAGE followed by western blot with CELF2 antibody (PHB61001) at 1  $\mu$ g/ml.

Lane 1: Recombinant protein

Second Ab: Goat Anti-Rabbit IgG H&L Polyclonal antibody, HRP (PTB96431) at 0.1  $\mu$ g/mL.

Predict MW: 22 kDa

Observed MW: 22 kDa