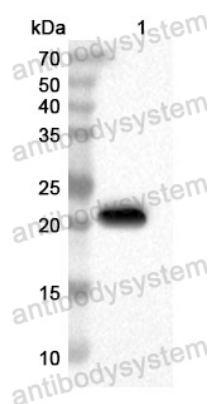


Anti-Human PPP3R2 Polyclonal Antibody

Summary

Catalog No.	PHK56401
Host species	Rabbit
Tested applications	ELISA: 1:4000-1:8000, IHC: 1:50-1:100, WB: 1:1000-1:4000
Species reactivity	Human
Immunogen	E. coli - derived recombinant Human PPP3R2 (Met1-Val170).
Form	Liquid
Storage buffer	0.01M PBS, pH 7.4, 50% Glycerol, 0.05% Proclin 300.
Clonality	Polyclonal
Isotype	IgG
Applications	ELISA, IHC, WB
Target	CBLP, Protein phosphatase 2B regulatory subunit 2, PPP3R2, Protein phosphatase 3 regulatory subunit B beta isoform, CNBII, Calcineurin B-like protein, PPP3RL, PPP3R1-like, Calcineurin BII, Calcineurin subunit B type 2
Purification	Purified by antigen affinity column.
Accession	Q96LZ3
Stability and Storage	Use a manual defrost freezer and avoid repeated freeze thaw cycles. Store at 2 to 8°C for frequent use. Store at -20 to -80°C for twelve months from the date of receipt.
Note	For research use only.

Data Image



Western Blot

Recombinant Protein lysates were subjected to SDS PAGE followed by western blot with PPP3R2 antibody (PHK56401) at 1 μ g/ml.

Lane 1: Recombinant protein

Second Ab: Goat Anti-Rabbit IgG H&L Polyclonal antibody, HRP (PTB96431) at 0.1 μ g/mL.

Predict MW: 22 kDa

Observed MW: 22 kDa