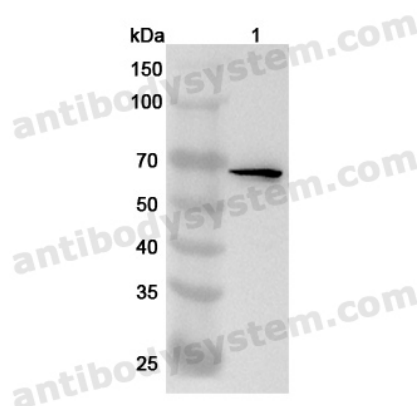


Anti-Human WDR46 Polyclonal Antibody

Summary

Catalog No.	PHA45301
Host species	Rabbit
Tested applications	ELISA: 1:4000-1:8000, IHC: 1:50-1:100, WB: 1:1000-1:4000
Species reactivity	Human
Immunogen	E. coli - derived recombinant Human WDR46 (Lys187-Glu523).
Form	Liquid
Storage buffer	0.01M PBS, pH 7.4, 50% Glycerol, 0.05% Proclin 300.
Clonality	Polyclonal
Isotype	IgG
Applications	ELISA, IHC, WB
Target	WDR46, C6orf11, BING4, WD repeat-containing protein BING4, WD repeat-containing protein 46
Purification	Purified by antigen affinity column.
Accession	O15213
Stability and Storage	Use a manual defrost freezer and avoid repeated freeze thaw cycles. Store at 2 to 8°C for frequent use. Store at -20 to -80°C for twelve months from the date of receipt.
Note	For research use only.

Data Image



Western Blot

Various lysates were subjected to SDS PAGE followed by western blot with WDR46 antibody (PHA45301) at 1 μ g/ml.

Lane 1: Hela cell lysate

Second Ab: Goat Anti-Rabbit IgG H&L Polyclonal antibody, HRP (PTB96431) at 0.1 μ g/mL.

Predict MW: 68 kDa

Observed MW: 68 kDa