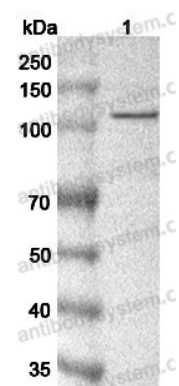


Anti-C6 Polyclonal Antibody

Summary

Catalog No.	PHC99701
Host species	Rabbit
Tested applications	ELISA: 1:4000-1:8000, IHC: 1:50-1:200, WB: 1:500-1:4000
Species reactivity	Human
Immunogen	E. coli - derived recombinant Human C6 (Gln682-Ala934).
Form	Liquid
Storage buffer	0.01M PBS, pH 7.4, 50% Glycerol, 0.05% Proclin 300.
Concentration	0.57 mg/ml
Clonality	Polyclonal
Isotype	IgG
Applications	ELISA, IHC, WB
Target	Complement component C6,C6
Purification	Purified by antigen affinity column.
Accession	P13671
Stability and Storage	Use a manual defrost freezer and avoid repeated freeze thaw cycles. Store at 2 to 8°C for frequent use. Store at -20 to -80°C for twelve months from the date of receipt.
Note	For research use only.

Data Image



Western Blot

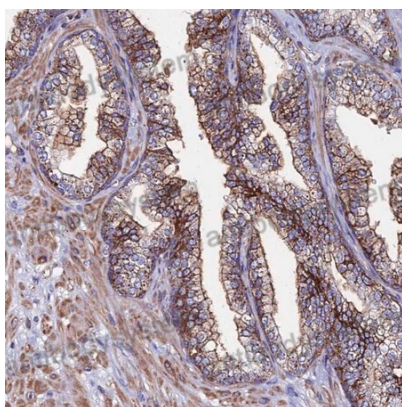
Various lysates were subjected to SDS PAGE followed by western blot with C6 antibody (PHC99701) at 1µg/ml.

Lane 1: Human plasma lysate

Second Ab: Goat Anti-Rabbit IgG H&L Polyclonal antibody, HRP (PTB96431) at 0.1 µg/mL.

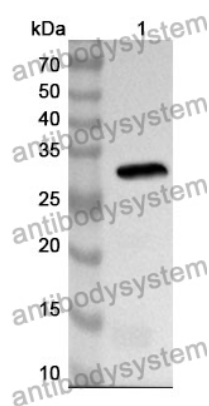
Predict MW: 105 kDa

Observed MW: 105 kDa



Immunohistochemical

Immunohistochemical analysis of human prostate stained for C6 with PHC99701.



Western Blot

Recombinant Protein lysates were subjected to SDS PAGE followed by western blot with C6 antibody (PHC99701) at 1 µg/ml.

Lane 1: Recombinant Protein

Second Ab: Goat Anti-Rabbit IgG H&L Polyclonal antibody, HRP (PTB96431) at 0.1 µg/mL.

Predict MW: 31 kDa

Observed MW: 31 kDa