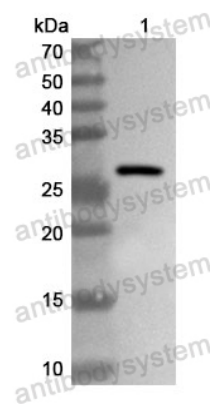


Anti-Human KDM5C Polyclonal Antibody

Summary

Catalog No.	PHE31301
Host species	Rabbit
Tested applications	ELISA: 1:4000-1:8000, IHC: 1:50-1:100, WB: 1:1000-1:4000
Species reactivity	Human
Immunogen	E. coli - derived recombinant Human KDM5C (Leu394-Asp621).
Form	Liquid
Storage buffer	0.01M PBS, pH 7.4, 50% Glycerol, 0.05% Proclin 300.
Clonality	Polyclonal
Isotype	IgG
Applications	ELISA, IHC, WB
Target	DXS1272E, Protein Xe169, Protein SmcX, JARID1C, [histone H3]-trimethyl-L-lysine(4) demethylase 5C, XE169, SMCX, Lysine-specific demethylase 5C, KDM5C, Jumonji/ARID domain-containing protein 1C, Histone demethylase JARID1C
Purification	Purified by antigen affinity column.
Accession	P41229
Stability and Storage	Use a manual defrost freezer and avoid repeated freeze thaw cycles. Store at 2 to 8°C for frequent use. Store at -20 to -80°C for twelve months from the date of receipt.
Note	For research use only.

Data Image



Western Blot

Recombinant Protein lysates were subjected to SDS PAGE followed by western blot with KDM5C antibody (PHE31301) at 1 μ g/ml.

Lane 1: Recombinant protein

Second Ab: Goat Anti-Rabbit IgG H&L Polyclonal antibody, HRP (PTB96431) at 0.1 μ g/mL.

Predict MW: 28 kDa

Observed MW: 28 kDa