

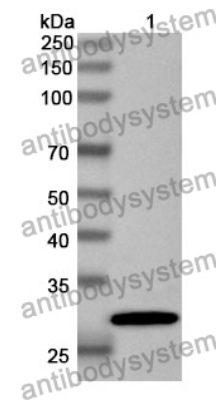
# Anti-Human MAPK8IP1 Polyclonal Antibody

## Summary

---

<b>Catalog No.</b>	PHK51101
<b>Host species</b>	Rabbit
<b>Tested applications</b>	ELISA: 1:4000-1:8000, IHC: 1:50-1:100, WB: 1:1000-1:4000
<b>Species reactivity</b>	Human
<b>Immunogen</b>	E. coli - derived recombinant Human MAPK8IP1 (Arg468-Glu711).
<b>Form</b>	Liquid
<b>Storage buffer</b>	0.01M PBS, pH 7.4, 50% Glycerol, 0.05% Proclin 300.
<b>Clonality</b>	Polyclonal
<b>Isotype</b>	IgG
<b>Applications</b>	ELISA, IHC, WB
<b>Target</b>	Islet-brain 1, C-Jun-amino-terminal kinase-interacting protein 1, JNK-interacting protein 1, JNK MAP kinase scaffold protein 1, Mitogen-activated protein kinase 8-interacting protein 1, MAPK8IP1, JIP1, PRKM8IP, JIP-1, IB-1, IB1
<b>Purification</b>	Purified by antigen affinity column.
<b>Accession</b>	Q9UQF2
<b>Stability and Storage</b>	Use a manual defrost freezer and avoid repeated freeze thaw cycles. Store at 2 to 8°C for frequent use. Store at -20 to -80°C for twelve months from the date of receipt.
<b>Note</b>	For research use only.

## Data Image



WESTERN-BLOT

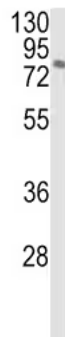
Recombinant Protein lysates were subjected to SDS PAGE followed by western blot with MAPK8IP1 antibody (PHK51101) at 1 µg/ml.

Lane 1: Recombinant protein

Second Ab: Goat Anti-Rabbit IgG H&L Polyclonal antibody, HRP (PTB96431) at 0.1 µg/mL.

Predict MW: 30 kDa

Observed MW: 30 kDa



Western Blot

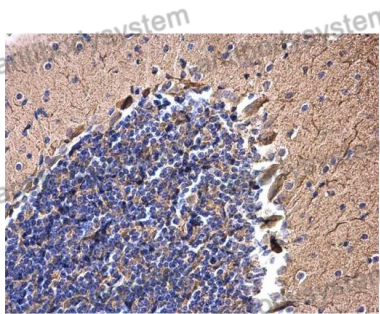
Various lysates were subjected to SDS PAGE followed by western blot with MAPK8IP1 antibody (PHK51101) at 1 µg/ml.

Lane 1: MCF7

Second Ab: Goat Anti-Rabbit IgG H&L Polyclonal antibody, HRP (PTB96431) at 0.1 µg/mL.

Predict MW: 78 kDa

Observed MW: 78 kDa



Immunohistochemical

Immunohistochemical analysis of mouse brain stained for MAPK8IP1 with PHK51101.