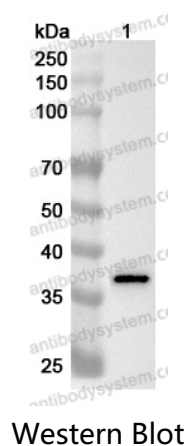


Anti-Human GALE Polyclonal Antibody

Summary

Catalog No.	PHG78601
Host species	Rabbit
Tested applications	ELISA: 1:4000-1:8000, IHC: 1:50-1:100, WB: 1:1000-1:4000
Species reactivity	Human
Immunogen	E. coli - derived recombinant Human GALE (Met1-Ala348).
Form	Liquid
Storage buffer	0.01M PBS, pH 7.4, 50% Glycerol, 0.05% Proclin 300.
Clonality	Polyclonal
Isotype	IgG
Applications	ELISA, IHC, WB
Target	UDP-galactose 4-epimerase, UDP-N-acetylgalactosamine 4-epimerase, Galactowaldenase, UDP-glucose 4-epimerase, GALE, UDP-GalNAc 4-epimerase, UDP-N-acetylglucosamine 4-epimerase, UDP-GlcNAc 4-epimerase
Purification	Purified by antigen affinity column.
Accession	Q14376
Stability and Storage	Use a manual defrost freezer and avoid repeated freeze thaw cycles. Store at 2 to 8°C for frequent use. Store at -20 to -80°C for twelve months from the date of receipt.
Note	For research use only.

Data Image



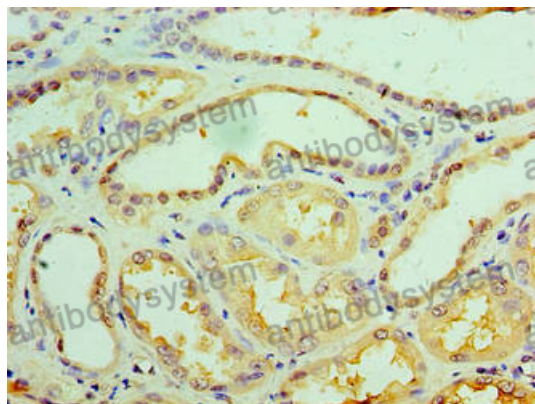
Various lysates were subjected to SDS PAGE followed by western blot with GALE antibody (PHG78601) at 1 μ g/ml.

Lane 1: NIH3T3 cell lysate

Second Ab: Goat Anti-Rabbit IgG H&L Polyclonal antibody, HRP (PTB96431) at 0.1 μ g/mL.

Predict MW: 38 kDa

Observed MW: 38 kDa



Immunohistochemical

Immunohistochemical analysis of human kidney stained for GALE with PHG78601.