

Anti-Human FEN1 Polyclonal Antibody

Summary

Catalog No.	PHE24401
Host species	Rabbit
Tested applications	ELISA: 1:4000-1:8000, IHC: 1:50-1:100, WB: 1:1000-1:4000
Species reactivity	Human
Immunogen	E. coli - derived recombinant Human FEN1 (Met1-Thr336).
Form	Liquid
Storage buffer	0.01M PBS, pH 7.4, 50% Glycerol, 0.05% Proclin 300.
Clonality	Polyclonal
Isotype	IgG
Applications	ELISA, IHC, WB
Target	FEN-1, Maturation factor 1, hFEN-1, DNase IV, RAD2, FEN1, Flap endonuclease 1, MF1, Flap structure-specific endonuclease 1
Purification	Purified by antigen affinity column.
Accession	P39748
Stability and Storage	Use a manual defrost freezer and avoid repeated freeze thaw cycles. Store at 2 to 8°C for frequent use. Store at -20 to -80°C for twelve months from the date of receipt.
Note	For research use only.

Data Image

Various lysates were subjected to SDS PAGE followed by western blot with FEN1 antibody (PHE24401) at 1µg/ml.

Lane 1: Daudi cell lysate

Lane 2: NIH3T3 cell lysate

Lane 3: HepG2 cell lysate

Lane 4: 293T cell lysate

Lane 5: Jurkat cell lysate

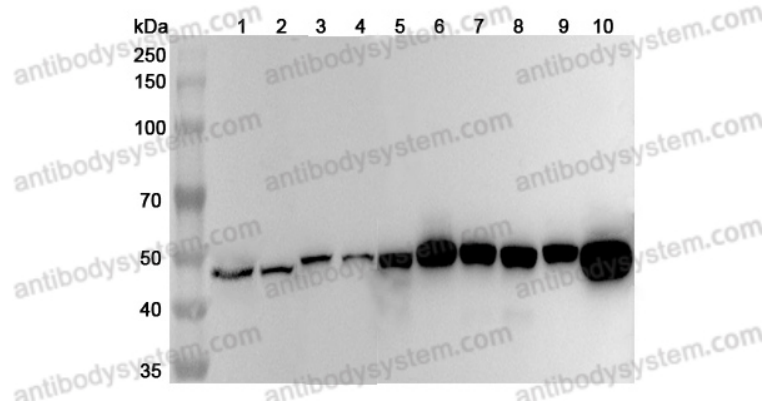
Lane 6: PC-12 cell lysate

Lane 7: Mouse testis lysate

Lane 8: Mouse spleen lysate

Lane 9: Rat testis lysate

Lane 10: Rat spleen lysate



Western Blot

Second Ab: Goat Anti-Rabbit IgG H&L Polyclonal antibody, HRP (PTB96431) at 0.1 µg/mL.

Predict MW: 43 kDa

Observed MW: 48 kDa

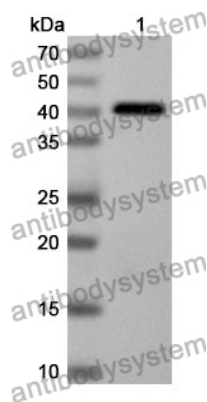
Recombinant Protein lysates were subjected to SDS PAGE followed by western blot with FEN1 antibody (PHE24401) at 1 µg/ml.

Lane 1: Recombinant Protein

Second Ab: Goat Anti-Rabbit IgG H&L Polyclonal antibody, HRP (PTB96431) at 0.1 µg/mL.

Predict MW: 40 kDa

Observed MW: 40 kDa



Western Blot