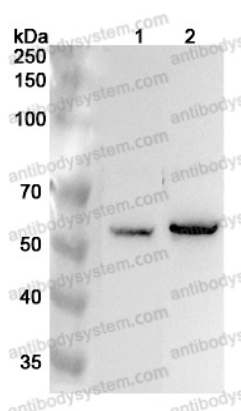


Anti-Human EHD1 Polyclonal Antibody

Summary

Catalog No.	PHK50801
Host species	Rabbit
Tested applications	ELISA: 1:4000-1:8000, IHC: 1:50-1:100, WB: 1:1000-1:4000
Species reactivity	Human
Immunogen	E. coli - derived recombinant Human EHD1 (Thr20-Ser402).
Form	Liquid
Storage buffer	0.01M PBS, pH 7.4, 50% Glycerol, 0.05% Proclin 300.
Clonality	Polyclonal
Isotype	IgG
Applications	ELISA, IHC, WB
Target	PAST, EHD1, PAST1, PAST homolog 1, EH domain-containing protein 1, Testilin, hPAST1
Purification	Purified by antigen affinity column.
Accession	Q9H4M9
Stability and Storage	Use a manual defrost freezer and avoid repeated freeze thaw cycles. Store at 2 to 8°C for frequent use. Store at -20 to -80°C for twelve months from the date of receipt.
Note	For research use only.

Data Image



Western Blot

Various lysates were subjected to SDS PAGE followed by western blot with EHD1 antibody (PHK50801) at 1µg/ml.

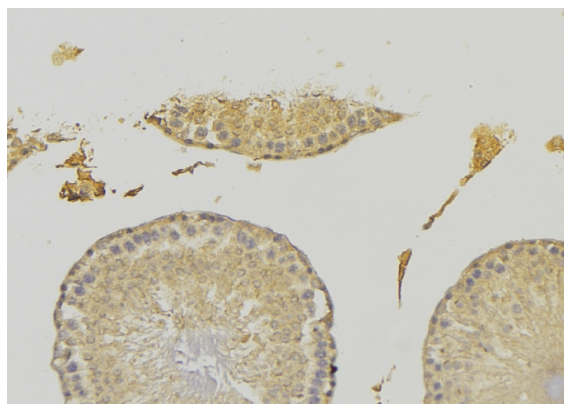
Lane 1: Mouse lung lysate

Lane 2: Rat lung lysate

Second Ab: Goat Anti-Rabbit IgG H&L Polyclonal antibody, HRP (PTB96431) at 0.1 µg/mL.

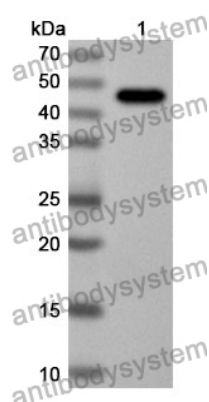
Predict MW: 60 kDa

Observed MW: 60 kDa



Immunohistochemical

Immunohistochemical analysis of rat testis stained for EHD1 with PHK50801.



Western Blot

Recombinant Protein lysates were subjected to SDS PAGE followed by western blot with EHD1 antibody (PHK50801) at 1 µg/ml.

Lane 1: Recombinant Protein

Second Ab: Goat Anti-Rabbit IgG H&L Polyclonal antibody, HRP (PTB96431) at 0.1 µg/mL.

Predict MW: 46 kDa

Observed MW: 46 kDa