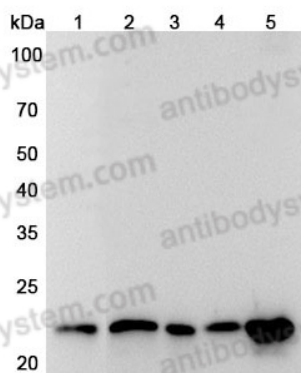


Anti-Human CBX5 Polyclonal Antibody

Summary

Catalog No.	PHE45601
Host species	Rabbit
Tested applications	ELISA: 1:4000-1:8000, IHC: 1:50-1:100, WB: 1:1000-1:4000
Species reactivity	Human
Immunogen	E. coli - derived recombinant Human CBX5 (Gly2-Lys80).
Form	Liquid
Storage buffer	0.01M PBS, pH 7.4, 50% Glycerol, 0.05% Proclin 300.
Clonality	Polyclonal
Isotype	IgG
Applications	ELISA, IHC, WB
Target	Heterochromatin protein 1 homolog alpha, Chromobox protein homolog 5, HP1A, Antigen p25, HP1 alpha, CBX5
Purification	Purified by antigen affinity column.
Accession	P45973
Stability and Storage	Use a manual defrost freezer and avoid repeated freeze thaw cycles. Store at 2 to 8°C for frequent use. Store at -20 to -80°C for twelve months from the date of receipt.
Note	For research use only.

Data Image



WESTERN BLOT

Various lysates were subjected to SDS PAGE followed by western blot with CBX5 antibody (PHE45601) at 1 μ g/mL .

Lane 1: MCF-7 cell lysate

Lane 2: K562 cell lysate

Lane 3: PC-12 cell lysate

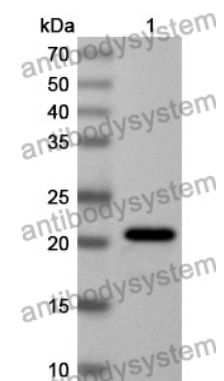
Lane 4: NIH3T3 cell lysate

Lane 5: A549 cell lysate

Second Ab: Goat Anti-Rabbit IgG H&L Polyclonal antibody, HRP (PTB96431) at 0.1 μ g/mL.

Predict MW: 22 kDa

Observed MW: 22 kDa



WESTERN-BLOT

Recombinant Protein lysates were subjected to SDS PAGE followed by western blot with CBX5 antibody (PHE45601) at 1 μ g/ml.

Lane 1: Recombinant protein

Second Ab: Goat Anti-Rabbit IgG H&L Polyclonal antibody, HRP (PTB96431) at 0.1 μ g/mL.

Predict MW: 22 kDa

Observed MW: 22 kDa