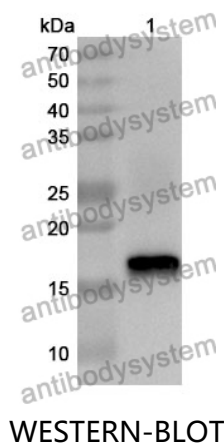


Anti-Human BTG2 Polyclonal Antibody

Summary

Catalog No.	PHF69201
Host species	Rabbit
Tested applications	ELISA: 1:4000-1:8000, IHC: 1:50-1:100, WB: 1:1000-1:4000
Species reactivity	Human
Immunogen	E. coli - derived recombinant Human BTG2 (Met1-Glu125).
Form	Liquid
Storage buffer	0.01M PBS, pH 7.4, 50% Glycerol, 0.05% Proclin 300.
Clonality	Polyclonal
Isotype	IgG
Applications	ELISA, IHC, WB
Target	BTG2, NGF-inducible anti-proliferative protein PC3, Protein BTG2, PC3, BTG family member 2
Purification	Purified by antigen affinity column.
Accession	P78543
Stability and Storage	Use a manual defrost freezer and avoid repeated freeze thaw cycles. Store at 2 to 8°C for frequent use. Store at -20 to -80°C for twelve months from the date of receipt.
Note	For research use only.

Data Image



Recombinant Protein lysates were subjected to SDS PAGE followed by western blot with BTG2 antibody (PHF69201) at 1 µg/ml.

Lane 1: Recombinant protein

Second Ab: Goat Anti-Rabbit IgG H&L Polyclonal antibody, HRP (PTB96431) at 0.1 µg/mL.

Predict MW: 16 kDa

Observed MW: 16 kDa

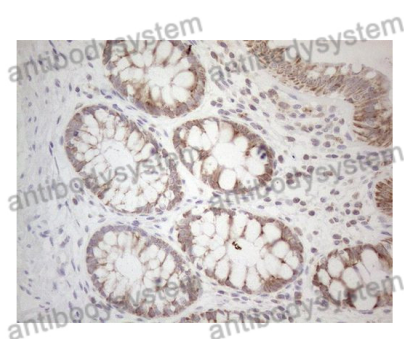
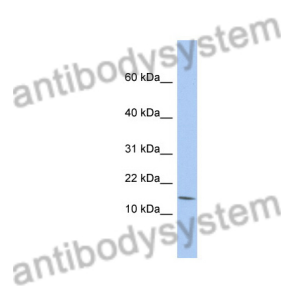
Various lysates were subjected to SDS PAGE followed by western blot with BTG2 antibody (PHF69201) at 1 µg/ml.

Lane 1: ACHN

Second Ab: Goat Anti-Rabbit IgG H&L Polyclonal antibody, HRP (PTB96431) at 0.1 µg/mL.

Predict MW: 17 kDa

Observed MW: 17 kDa



Immunohistochemical analysis of human colon stained for BTG2 with PHF69201.

Immunohistochemical