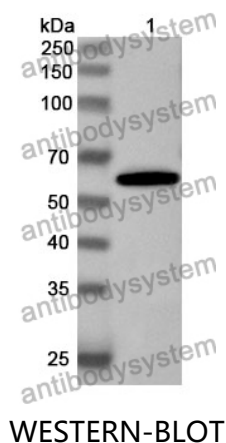


Anti-Citrus clementina Laccase Polyclonal Antibody

Summary

Catalog No.	PZZ03601
Host species	Rabbit
Tested applications	ELISA: 1:4000-1:8000, IHC: 1:50-1:100, WB: 1:1000-1:4000
Species reactivity	Citrus clementina (Clementine) (Citrus deliciosa x Citrus sinensis)
Immunogen	E. coli - derived recombinant Citrus clementina Laccase (Ala22-Cys553).
Form	Liquid
Storage buffer	0.01M PBS, pH 7.4, 50% Glycerol, 0.05% Proclin 300.
Clonality	Polyclonal
Isotype	IgG
Applications	ELISA, IHC, WB
Target	Laccase, 1.10.3.2, Benzenediol:oxygen oxidoreductase, Diphenol oxidase, Urishiol oxidase, CICLE_v10031134mg
Purification	Purified by antigen affinity column.
Accession	V4SM97
Stability and Storage	Use a manual defrost freezer and avoid repeated freeze thaw cycles. Store at 2 to 8°C for frequent use. Store at -20 to -80°C for twelve months from the date of receipt.
Note	For research use only.

Data Image



Recombinant Protein lysates were subjected to SDS PAGE followed by western blot with Laccase antibody (PZZ03601) at 1 μ g/ml.

Lane 1: Recombinant protein

Second Ab: Goat Anti-Rabbit IgG H&L Polyclonal antibody, HRP (PTB96431) at 0.1 μ g/mL.

Predict MW: 61 kDa

Observed MW: 61 kDa