

Anti-Mycoplasma pneumoniae mgpA/Adhesin P1 Polyclonal Antibody

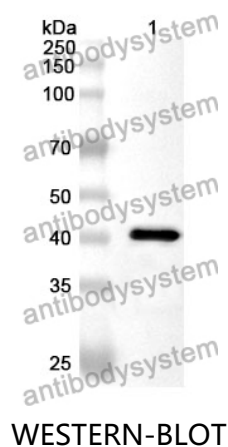
Summary

Catalog No.	PXX09301
Host species	Rabbit
Tested applications	ELISA: 1:4000-1:8000, IHC: 1:50-1:200, WB: 1:1000-1:4000
Species reactivity	Mycoplasma pneumoniae (strain ATCC 29342 / M129 / Subtype 1) (Mycoplasma pneumoniae)
Immunogen	E. coli - derived recombinant Mycoplasma pneumoniae mgpA/Adhesin P1 (Ala1160-Asp1521).
Form	Liquid
Storage buffer	0.01M PBS, pH 7.4, 50% Glycerol, 0.05% Proclin 300.
Concentration	3.12 mg/ml
Clonality	Polyclonal
Isotype	IgG
Applications	ELISA, IHC, WB
Target	Adhesin P1, Attachment protein, Cytadhesin P1, mgpA, MPN_141, MP013
Purification	Purified by antigen affinity column.
Accession	P11311
Stability and Storage	Use a manual defrost freezer and avoid repeated freeze thaw cycles. Store at 2 to 8°C for frequent use. Store at -20 to -80°C for twelve months from the date of receipt.

Note

For research use only.

Data Image



Recombinant Protein lysates were subjected to SDS PAGE followed by western blot with mgpA/Adhesin P1 antibody (PXX09301) at 1 μ g/ml.

Lane 1: Recombinant protein

Second Ab: Goat Anti-Rabbit IgG H&L Polyclonal antibody, HRP (PTB96431) at 0.1 μ g/mL.

Predict MW: 40 kDa

Observed MW: 40 kDa