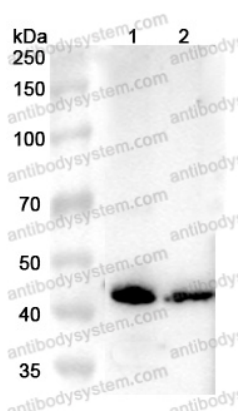


Anti-Human ROM1 Polyclonal Antibody

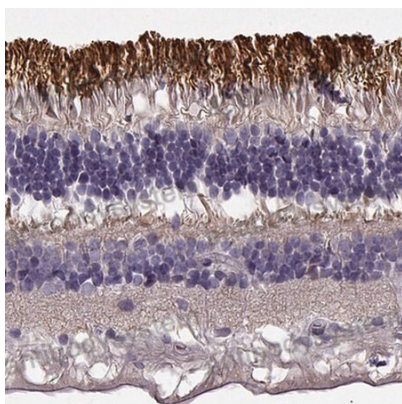
Summary

Catalog No.	PHF98901
Host species	Rabbit
Tested applications	ELISA: 1:4000-1:8000, IHC: 1:50-1:100, WB: 1:1000-1:4000
Species reactivity	Human
Immunogen	E. coli - derived recombinant Human ROM1 (Gly127-Asp263).
Form	Liquid
Storage buffer	0.01M PBS, pH 7.4, 50% Glycerol, 0.05% Proclin 300.
Clonality	Polyclonal
Isotype	IgG
Applications	ELISA, IHC, WB
Target	Tspan-23, Rod outer segment membrane protein 1, TSPAN23, ROSP1, Tetraspanin-23, ROM1
Purification	Purified by antigen affinity column.
Accession	Q03395
Stability and Storage	Use a manual defrost freezer and avoid repeated freeze thaw cycles. Store at 2 to 8°C for frequent use. Store at -20 to -80°C for twelve months from the date of receipt.
Note	For research use only.

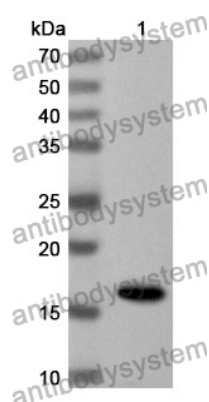
Data Image



Western Blot



Immunohistochemical



Western Blot

Various lysates were subjected to SDS PAGE followed by western blot with ROM1 antibody (PHF98901) at 1 μ g/ml.

Lane 1: Mouse eye lysate

Lane 2: Rat eye lysate

Second Ab: Goat Anti-Rabbit IgG H&L Polyclonal antibody, HRP (PTB96431) at 0.1 μ g/mL.

Predict MW: 38 kDa

Observed MW: 42 kDa

Immunohistochemical analysis of human retina tissue stained for ROM1 with PHF98901.

Recombinant Protein lysates were subjected to SDS PAGE followed by western blot with ROM1 antibody (PHF98901) at 1 μ g/ml.

Lane 1: Recombinant Protein

Second Ab: Goat Anti-Rabbit IgG H&L Polyclonal antibody, HRP (PTB96431) at 0.1 μ g/mL.

Predict MW: 18 kDa

Observed MW: 18 kDa