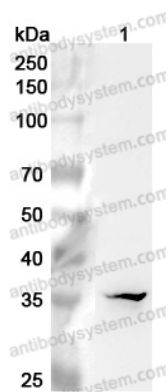


Anti-Human MSI2 Polyclonal Antibody

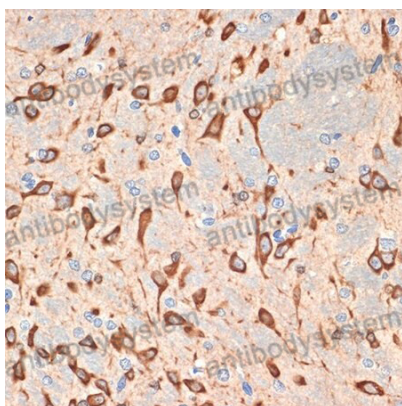
Summary

Catalog No.	PHK49601
Host species	Rabbit
Tested applications	ELISA: 1:4000-1:8000, IHC: 1:50-1:100, WB: 1:1000-1:4000
Species reactivity	Human
Immunogen	E. coli - derived recombinant Human MSI2 (Lys22-Ala96).
Form	Liquid
Storage buffer	0.01M PBS, pH 7.4, 50% Glycerol, 0.05% Proclin 300.
Clonality	Polyclonal
Isotype	IgG
Applications	ELISA, IHC, WB
Target	Musashi-2, RNA-binding protein Musashi homolog 2, MSI2
Purification	Purified by antigen affinity column.
Accession	Q96DH6
Stability and Storage	Use a manual defrost freezer and avoid repeated freeze thaw cycles. Store at 2 to 8°C for frequent use. Store at -20 to -80°C for twelve months from the date of receipt.
Note	For research use only.

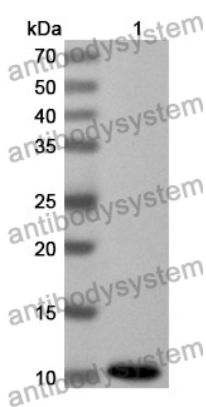
Data Image



Western Blot



Immunohistochemical



Western Blot

Various lysates were subjected to SDS PAGE followed by western blot with MSI2 antibody (PHK49601) at 1 µg/ml.

Lane 1: A549 cell lysate

Second Ab: Goat Anti-Rabbit IgG H&L Polyclonal antibody, HRP (PTB96431) at 0.1 µg/mL.

Predict MW: 36 kDa

Observed MW: 36 kDa

Immunohistochemical analysis of rat brain stained for MSI2 with PHK49601.

Recombinant Protein lysates were subjected to SDS PAGE followed by western blot with MSI2 antibody (PHK49601) at 1 µg/ml.

Lane 1: Recombinant Protein

Second Ab: Goat Anti-Rabbit IgG H&L Polyclonal antibody, HRP (PTB96431) at 0.1 µg/mL.

Predict MW: 11 kDa

Observed MW: 11 kDa