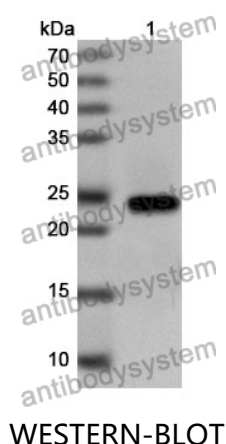


Anti-Human MMP28 Polyclonal Antibody

Summary

Catalog No.	PHJ55201
Host species	Rabbit
Tested applications	ELISA: 1:4000-1:8000, IHC: 1:50-1:100, WB: 1:1000-1:4000
Species reactivity	Human
Immunogen	E. coli - derived recombinant Human MMP28 (Lys322-Phe520).
Form	Liquid
Storage buffer	0.01M PBS, pH 7.4, 50% Glycerol, 0.05% Proclin 300.
Clonality	Polyclonal
Isotype	IgG
Applications	ELISA, IHC, WB
Target	MMP-28, Epilysin, MMP28, MMP25, Matrix metalloproteinase-28
Purification	Purified by antigen affinity column.
Accession	Q9H239
Stability and Storage	Use a manual defrost freezer and avoid repeated freeze thaw cycles. Store at 2 to 8°C for frequent use. Store at -20 to -80°C for twelve months from the date of receipt.
Note	For research use only.

Data Image



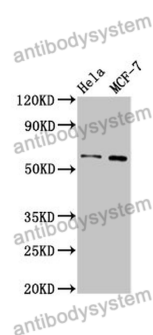
Recombinant Protein lysates were subjected to SDS PAGE followed by western blot with MMP28 antibody (PHJ55201) at 1 µg/ml.

Lane 1: Recombinant protein

Second Ab: Goat Anti-Rabbit IgG H&L Polyclonal antibody, HRP (PTB96431) at 0.1 µg/mL.

Predict MW: 25 kDa

Observed MW: 25 kDa



Western Blot

Various lysates were subjected to SDS PAGE followed by western blot with MMP28 antibody (PHJ55201) at 1 µg/ml.

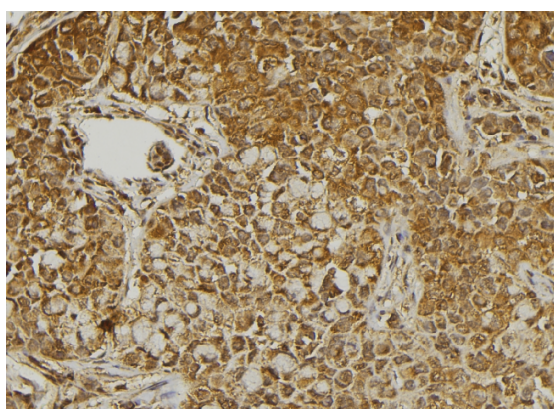
Lane 1: Hela

Lane 2: MCF7

Second Ab: Goat Anti-Rabbit IgG H&L Polyclonal antibody, HRP (PTB96431) at 0.1 µg/mL.

Predict MW: 59 kDa

Observed MW: 59 kDa



Immunohistochemical

Immunohistochemical analysis of human pancreas stained for MMP28 with PHJ55201.