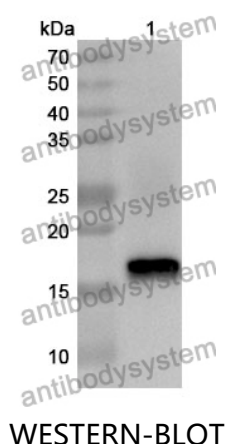


Anti-Human BTG1 Polyclonal Antibody

Summary

Catalog No.	PHF50801
Host species	Rabbit
Tested applications	ELISA: 1:4000-1:8000, IHC: 1:50-1:100, WB: 1:1000-1:4000
Species reactivity	Human
Immunogen	E. coli - derived recombinant Human BTG1 (Met1-Glu126).
Form	Liquid
Storage buffer	0.01M PBS, pH 7.4, 50% Glycerol, 0.05% Proclin 300.
Clonality	Polyclonal
Isotype	IgG
Applications	ELISA, IHC, WB
Target	Protein BTG1, B-cell translocation gene 1 protein, BTG1
Purification	Purified by antigen affinity column.
Accession	P62324
Stability and Storage	Use a manual defrost freezer and avoid repeated freeze thaw cycles. Store at 2 to 8°C for frequent use. Store at -20 to -80°C for twelve months from the date of receipt.
Note	For research use only.

Data Image



WESTERN-BLOT

Recombinant Protein lysates were subjected to SDS PAGE followed by western blot with BTG1 antibody (PHF50801) at 1 µg/ml.

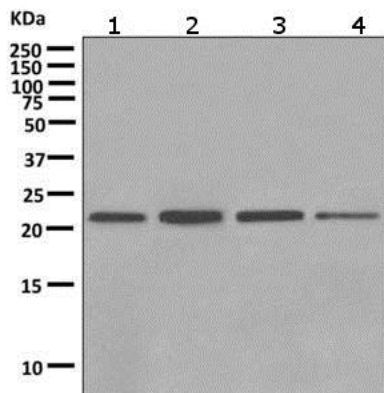
Lane 1: Recombinant protein

Second Ab: Goat Anti-Rabbit IgG H&L Polyclonal antibody, HRP (PTB96431) at 0.1 µg/mL.

Predict MW: 17 kDa

Observed MW: 17 kDa

Various lysates were subjected to SDS PAGE followed by western blot with BTG1 antibody (PHF50801) at 1 µg/ml.



Western Blot

Lane 1: Human kidney

Lane 2: SH-SY5Y

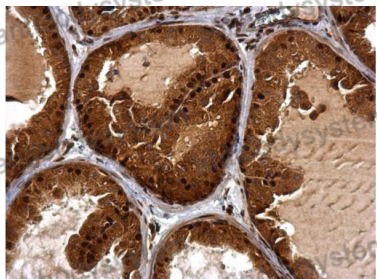
Lane 3: NIH/3T3

Lane 4: MCF7

Second Ab: Goat Anti-Rabbit IgG H&L Polyclonal antibody, HRP (PTB96431) at 0.1 µg/mL.

Predict MW: 19 kDa

Observed MW: 21 kDa



Immunohistochemical

Immunohistochemical analysis of mouse prostate tissue stained for BTG1 with PHF50801.