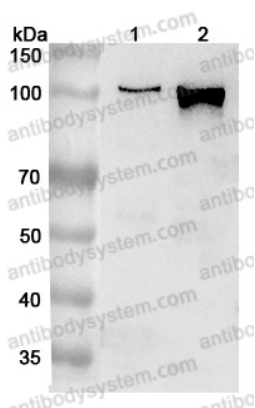


Anti-Human AP2A1 Polyclonal Antibody

Summary

Catalog No.	PHB74401
Host species	Rabbit
Tested applications	ELISA: 1:4000-1:8000, IHC: 1:50-1:100, WB: 1:1000-1:4000
Species reactivity	Human
Immunogen	E. coli - derived recombinant Human AP2A1 (Ile737-Phe977).
Form	Liquid
Storage buffer	0.01M PBS, pH 7.4, 50% Glycerol, 0.05% Proclin 300.
Clonality	Polyclonal
Isotype	IgG
Applications	ELISA, IHC, WB
Target	AP-2 complex subunit alpha-1, Alpha1-adaptin, Adaptor protein complex AP-2 subunit alpha-1, 100 kDa coated vesicle protein A, Clathrin assembly protein complex 2 alpha-A large chain, ADTAA, CLAPA1, AP2A1, Adaptor-related protein complex 2 subunit alpha-1, Plasma membrane adaptor HA2/AP2 adaptin alpha A subunit, Alpha-adaptin A
Purification	Purified by antigen affinity column.
Accession	O95782
Stability and Storage	Use a manual defrost freezer and avoid repeated freeze thaw cycles. Store at 2 to 8°C for frequent use. Store at -20 to -80°C for twelve months from the date of receipt.
Note	For research use only.

Data Image



Western Blot

Various lysates were subjected to SDS PAGE followed by western blot with AP2A1 antibody (PHB74401) at 1 μ g/ml.

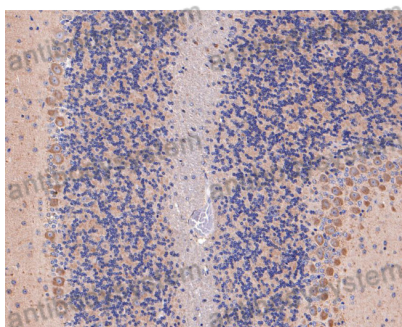
Lane 1: SKOV3 cell lysate

Lane 2: THP-1 cell lysate

Second Ab: Goat Anti-Rabbit IgG H&L Polyclonal antibody, HRP (PTB96431) at 0.1 μ g/mL.

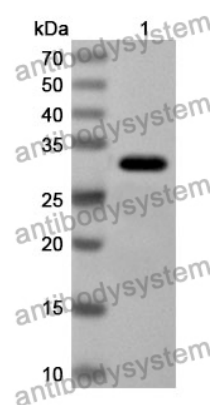
Predict MW: 108 kDa

Observed MW: 108 kDa



Immunohistochemical

Immunohistochemical analysis of mouse cerebellum stained for AP2A1 with PHB74401.



Western Blot

Recombinant Protein lysates were subjected to SDS PAGE followed by western blot with AP2A1 antibody (PHB74401) at 1 μ g/ml.

Lane 1: Recombinant Protein

Second Ab: Goat Anti-Rabbit IgG H&L Polyclonal antibody, HRP (PTB96431) at 0.1 μ g/mL.

Predict MW: 29 kDa

Observed MW: 29 kDa