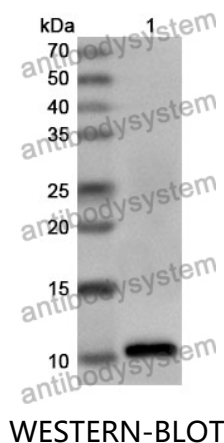


Anti-Human ZFP36 Polyclonal Antibody

Summary

Catalog No.	PHD71701
Host species	Rabbit
Tested applications	ELISA: 1:4000-1:8000, IHC: 1:50-1:100, WB: 1:1000-1:4000
Species reactivity	Human
Immunogen	E. coli - derived recombinant Human ZFP36 (Thr106-Gly176).
Form	Liquid
Storage buffer	0.01M PBS, pH 7.4, 50% Glycerol, 0.05% Proclin 300.
Clonality	Polyclonal
Isotype	IgG
Applications	ELISA, IHC, WB
Target	Zinc finger protein 36, RNF162A, TIS11A, Growth factor-inducible nuclear protein NUP475, Zfp-36, ZFP36, G0/G1 switch regulatory protein 24, G0S24, Tristetraprolin, NUP475, mRNA decay activator protein ZFP36, TTP
Purification	Purified by antigen affinity column.
Accession	P26651
Stability and Storage	Use a manual defrost freezer and avoid repeated freeze thaw cycles. Store at 2 to 8°C for frequent use. Store at -20 to -80°C for twelve months from the date of receipt.
Note	For research use only.

Data Image



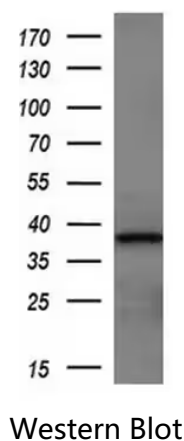
Recombinant Protein lysates were subjected to SDS PAGE followed by western blot with ZFP36 antibody (PHD71701) at 1 µg/ml.

Lane 1: Recombinant protein

Second Ab: Goat Anti-Rabbit IgG H&L Polyclonal antibody, HRP (PTB96431) at 0.1 µg/mL.

Predict MW: 10 kDa

Observed MW: 10 kDa



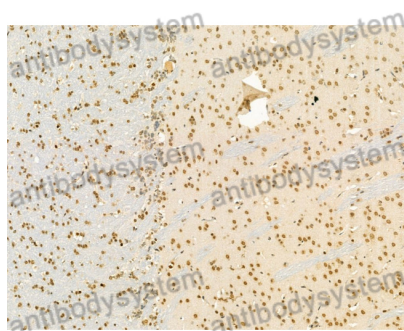
Various lysates were subjected to SDS PAGE followed by western blot with ZFP36 antibody (PHD71701) at 1 µg/ml.

Lane 1: Mouse liver

Second Ab: Goat Anti-Rabbit IgG H&L Polyclonal antibody, HRP (PTB96431) at 0.1 µg/mL.

Predict MW: 34 kDa

Observed MW: 38 kDa



Immunohistochemical

Immunohistochemical analysis of rat brain stained for ZFP36 with PHD71701.